

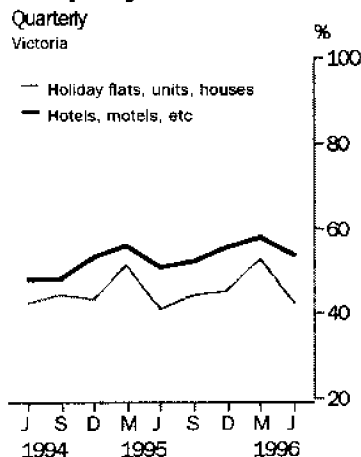
TOURIST ACCOMMODATION

VICTORIA

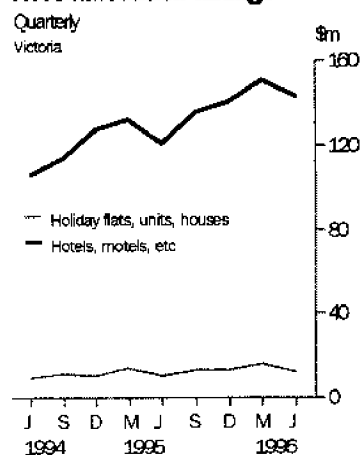
EMBARGOED UNTIL 11:30AM FRI 20 SEPTEMBER 1996

JUNE QTR KEY FIGURES

Occupancy rates



Accommodation takings



INQUIRIES

- For further information about these and related statistics, contact Jennifer Cox on 07 3222 6148, or any ABS Office.

	Jun 95	Jun 96	change
Hotels, Motels and Guest Houses			
Rooms available (No.)	29 543	30 007	1.6 %
Room occupancy rate (%)	51.1	53.5	2.4 pts
Takings from accommodation (\$'000)	120 636	142 716	18.3 %
Holiday Flats, Units and Houses			
Units, etc. available (No.)	3 559	3 763	5.7 %
Unit occupancy rate (%)	40.9	42.4	1.5 pts
Takings from accommodation (\$'000)	10 420	12 531	20.3 %
Caravan Parks			
Sites, cabins, etc. available (No.)	66 977	67 641	1.0 %
Site occupancy rate (%)	39.8	40.0	0.2 pts
Takings from accommodation (\$'000)	16 557	18 111	9.4 %
Visitor Hostels			
Bed spaces available (No.)	3 026	3 403	12.5 %
Bed occupancy rate (%)	33.8	34.5	0.7 pts
Takings from accommodation (\$'000)	1 245	1 513	21.5 %

JUNE QTR KEY POINTS

OCCUPANCY RISES EXCEED CAPACITY INCREASES

- All accommodation types recorded demand increases in excess of rises in capacity in June quarter 1996 compared with June quarter 1995, resulting in occupancy rate increases.
- Room nights occupied in hotels, motels and guest houses increased by 6.3% compared with an increase of 1.6% in rooms available, resulting in a room occupancy rate of 53.5% which was the highest June quarter result since 1986.
- For holiday flats, units and houses, unit nights occupied increased by 9.8% compared with an increase of 5.7% in units available, resulting in a rise of 1.5 percentage points in the occupancy rate to 42.4%.
- Similarly, for visitor hostels, demand rose by 13.7% compared with a capacity increase of 12.5% and the occupancy rate rose slightly to 34.5%, while for caravan parks, demand and capacity available rose slightly, and the site occupancy rate rose marginally to 40.0%.

INCREASES IN TAKINGS PER NIGHT OCCUPIED

- Average takings per room night occupied in hotels, motels and guest houses rose from \$88 in June quarter 1995 to \$98 in June quarter 1996, while for holiday flats, units and houses, the increase was from \$79 to \$86 per unit night occupied. For visitor hostels, average takings per guest night rose from \$13 to \$14. Average takings per site night occupied in caravan parks remained at \$7.

NOTES

FORTHCOMING ISSUES

ISSUE (Quarter)

EXPECTED RELEASE DATE

September 1996

18 December 1996

.....

CHANGES IN THIS ISSUE

As from 1 July 1995, extensive changes have been made to Local Government Areas (LGAs) in Victoria. Victoria now has 78 LGAs compared with the 210 which existed prior to the introduction of the changes. The extent of the changes has meant that most LGAs have names unrelated to the previously existing LGAs. For more details, refer to the Information Paper *Victorian Local Government Amalgamations 1994-95: Changes to the Australian Standard Geographic Classification (1257.0)*. Further information is available in the *Australian Standard Geographic Classification, Edition 2.5 (1216.0)*. Maps and an explanatory key showing the new Statistical Divisions (SDs) and Statistical Local Areas (SLAs), are printed on pages 31 - 35.

.....

STUART JACKSON
Deputy Commonwealth Statistician

TABLE 1 — SUMMARY OF HOTELS, MOTELS AND GUEST HOUSES WITH FACILITIES, VICTORIA

Particulars	Unit	Quarter ended				Year ended			
		March 1995	June 1995	September 1995	December 1995	March 1996	June 1996	June 1995	June 1996
LICENSED HOTELS WITH FACILITIES									
Establishments	No.	187	194	192	195	196	197
Guest rooms	No.	10,121	9,836	9,853	10,058	10,103	10,124
Bed spaces	No.	24,557	24,192	23,924	24,474	24,769	24,889
Employment (persons)	No.	9,795	9,429	9,719	9,938	9,835	9,864
Room nights occupied	'000	599.5	543.0	578.3	615.0	623.2	590.4	2,275.1	2,406.9
Room occupancy rate	per cent	65.9	60.7	63.8	67.1	67.8	64.2	62.3	65.7
Guest nights	'000	945.5	821.1	874.9	955.8	965.5	882.4	3,517.7	3,678.6
Bed occupancy rate	per cent	42.8	37.3	39.7	42.8	42.9	39.1	39.5	41.1
Guest arrivals	'000	435.6	389.2	431.7	433.5	465.0	433.7	1,632.7	1,764.0
Average length of stay	days	2.2	2.1	2.0	2.2	2.1	2.0	2.2	2.1
Takings from accommodation	\$'000	68,928	62,713	72,441	75,621	82,626	78,148	258,449	308,837
MOTELS AND GUEST HOUSES WITH FACILITIES									
Establishments	No.	816	822	817	820	823	824
Guest rooms	No.	19,852	19,707	19,651	19,740	19,788	19,883
Bed spaces	No.	58,023	57,919	57,690	58,052	58,170	58,326
Employment (persons)	No.	6,619	6,522	6,775	6,663	6,751	6,797
Room nights occupied	'000	907.4	829.1	843.3	904.2	945.0	867.8	3,380.3	3,560.3
Room occupancy rate	per cent	50.8	46.3	46.7	49.8	52.5	48.1	46.9	49.3
Guest nights	'000	1,603.7	1,403.4	1,467.4	1,578.1	1,704.8	1,506.5	5,852.6	6,256.7
Bed occupancy rate	per cent	30.7	26.7	27.7	29.6	32.2	28.5	27.7	29.5
Guest arrivals	'000	914.4	811.7	835.2	908.0	955.0	848.0	3,393.3	3,546.2
Average length of stay	days	1.8	1.7	1.8	1.7	1.8	1.8	1.7	1.8
Takings from accommodation	\$'000	62,972	57,923	62,845	64,711	68,253	64,568	234,827	260,377
TOTAL HOTELS, MOTELS AND GUEST HOUSES WITH FACILITIES									
Establishments	No.	1,003	1,016	1,009	1,015	1,019	1,021
Guest rooms	No.	29,973	29,543	29,504	29,798	29,891	30,007
Bed spaces	No.	82,580	82,111	81,614	82,526	82,939	83,215
Employment (persons)	No.	16,414	15,951	16,494	16,601	16,586	16,661
Room nights occupied	'000	1,506.9	1,372.1	1,421.6	1,519.1	1,568.2	1,458.2	5,655.4	5,967.2
Room occupancy rate	per cent	55.9	51.1	52.4	55.6	57.7	53.5	52.1	54.8
Guest nights	'000	2,549.1	2,224.5	2,342.2	2,533.8	2,670.3	2,388.9	9,370.3	9,935.3
Bed occupancy rate	per cent	34.3	29.8	31.2	33.5	35.4	31.6	31.2	32.9
Guest arrivals	'000	1,350.0	1,200.9	1,267.0	1,341.6	1,420.0	1,281.8	5,026.0	5,310.2
Average length of stay	days	1.9	1.9	1.8	1.9	1.9	1.9	1.9	1.9
Takings from accommodation	\$'000	131,900	120,636	135,286	140,332	150,879	142,716	493,276	569,214

TABLE 2 — SUMMARY OF CARAVAN PARKS, VICTORIA

Particulars	Unit	Quarter ended				Year ended			
		March 1995	June 1995	September 1995	December 1995	March 1996	June 1996	June 1995	June 1996
SHORT-TERM CARAVAN PARKS									
Establishments	No.	435	434	438	438	438	439
Capacity									
On-site vans	No.	2,018	1,991	2,051	2,065	2,067	2,064
Other powered sites	No.	36,393	36,364	36,594	36,701	36,760	36,898
Unpowered sites	No.	12,580	12,537	12,825	12,859	12,720	12,666
Cabins, etc.	No.	2,316	2,303	2,355	2,376	2,371	2,432
<i>Total capacity</i>	<i>No.</i>	<i>53,307</i>	<i>53,195</i>	<i>53,825</i>	<i>54,001</i>	<i>53,918</i>	<i>54,060</i>
Sites occupied by long-term guests	No.	1,717	1,717	1,711	1,731	1,729	1,758
Other sites permanently reserved	No.	15,389	14,840	14,941	15,283	16,005	15,201
Employment (persons)	No.	1,419	1,315	1,352	1,494	1,432	1,382
Site nights occupied	'000	2,245.2	1,864.9	1,745.5	1,979.0	2,300.9	1,885.2	7,775.7	7,910.6
Site occupancy rate	per cent	46.8	38.5	35.4	39.8	46.9	38.5	39.9	40.1
Takings from accommodation	\$'000	17,781	10,670	10,730	16,035	19,178	12,016	53,557	57,959
LONG-TERM CARAVAN PARKS									
Establishments	No.	164	164	162	162	161	160
Capacity									
On-site vans	No.	1,895	1,892	1,863	1,876	1,808	1,798
Other powered sites	No.	8,545	8,510	8,382	8,328	8,301	8,216
Unpowered sites	No.	2,170	2,160	2,170	2,182	2,138	2,167
Cabins, etc.	No.	1,201	1,220	1,282	1,323	1,413	1,400
<i>Total capacity</i>	<i>No.</i>	<i>13,811</i>	<i>13,782</i>	<i>13,697</i>	<i>13,709</i>	<i>13,660</i>	<i>13,581</i>
Sites occupied by long-term guests	No.	4,800	4,626	4,615	4,743	4,935	4,738
Other sites permanently reserved	No.	344	318	353	395	391	434
Employment (persons)	No.	504	497	501	494	509	503
Site nights occupied	'000	577.3	559.4	559.7	569.2	602.9	567.5	2,253.0	2,299.3
Site occupancy rate	per cent	46.4	44.6	44.4	45.2	48.5	45.9	44.7	46.0
Takings from accommodation	\$'000	6,288	5,887	5,769	6,169	6,682	6,095	23,816	24,714
TOTAL CARAVAN PARKS									
Establishments	No.	599	598	600	600	599	599
Capacity									
On-site vans	No.	3,913	3,883	3,914	3,941	3,875	3,862
Other powered sites	No.	44,938	44,874	44,976	45,029	45,061	45,114
Unpowered sites	No.	14,750	14,697	14,995	15,041	14,858	14,833
Cabins, etc.	No.	3,517	3,523	3,637	3,699	3,784	3,832
<i>Total capacity</i>	<i>No.</i>	<i>67,118</i>	<i>66,977</i>	<i>67,522</i>	<i>67,710</i>	<i>67,578</i>	<i>67,641</i>
Sites occupied by long-term guests	No.	6,517	6,343	6,326	6,474	6,664	6,496
Other sites permanently reserved	No.	15,733	15,158	15,294	15,678	16,396	15,635
Employment (persons)	No.	1,923	1,812	1,853	1,988	1,941	1,885
Site nights occupied	'000	2,822.5	2,424.3	2,305.3	2,548.1	2,903.7	2,452.7	10,028.7	10,209.8
Site occupancy rate	per cent	46.7	39.8	37.2	40.9	47.2	40.0	40.9	41.3
Takings from accommodation	\$'000	24,069	16,557	16,499	22,204	25,860	18,111	77,373	82,674

TABLE 3 — SUMMARY OF HOLIDAY FLATS, UNITS AND HOUSES, VICTORIA

Particulars	Unit	Quarter ended				Year ended		June 1995	June 1996
		March 1995	June 1995	September 1995	December 1995	March 1996	June 1996		
Letting entities	No.	220	219	216	217	227	224
Flats, units and houses									
Single bedroom	No.	1,136	1,139	1,151	1,145	1,225	1,223
Multiple bedroom	No.	2,608	2,420	2,373	2,531	2,744	2,540
<i>Total flats, units and houses</i>	<i>No.</i>	<i>3,744</i>	<i>3,559</i>	<i>3,524</i>	<i>3,676</i>	<i>3,969</i>	<i>3,763</i>	<i>..</i>	<i>..</i>
Bed spaces	No.	16,825	15,914	15,425	16,156	17,863	16,561
Employment (persons) (a)	No.	779	790	827	802	820	843
Unit nights occupied	'000	173.1	132.1	143.6	153.2	189.5	145.0	564.0	631.4
Unit occupancy rate	per cent	51.4	40.9	44.5	45.3	52.6	42.4	45.1	46.3
Unit lettings	'000	36.7	32.0	33.4	38.1	36.8	38.0	130.4	146.4
Average length of stay	days	4.7	4.1	4.3	4.0	5.1	3.8	4.3	4.3
Takings from accommodation	\$'000	13,733	10,420	13,163	12,812	15,765	12,531	45,851	54,272

(a) Employment numbers exclude real estate agents and their employees.

TABLE 4 — SUMMARY OF VISITOR HOSTELS, VICTORIA

Particulars	Unit	Quarter ended				Year ended		June 1995	June 1996
		March 1995	June 1995	September 1995	December 1995	March 1996	June 1996		
Establishments	No.	56	55	57	55	55	56
Bed spaces	No.	3,043	3,026	3,264	3,320	3,358	3,403
Employment (persons)	No.	170	170	183	198	196	186
Guest nights	'000	129.4	93.0	96.0	119.4	137.9	105.8	407.8	459.1
Bed occupancy rate	per cent	47.3	33.8	32.5	39.1	45.1	34.5	37.9	37.8
Guest arrivals	'000	53.0	39.4	41.1	49.9	49.3	41.2	169.7	181.4
Average length of stay	days	2.4	2.4	2.3	2.4	2.8	2.6	2.4	2.5
Takings from accommodation	\$'000	1,691	1,245	1,381	1,587	2,004	1,513	5,337	6,485

TABLE 5 — HOTELS, MOTELS AND GUEST HOUSES WITH FACILITIES BY STAR GRADING,
MELBOURNE CITY, MELBOURNE STATISTICAL DIVISION AND VICTORIA

Particulars	Melbourne City				Melbourne Statistical Division					
	Star grading				Star grading					
	Ungraded, 1 and 2	3	4 and 5	Total	Ungraded and 1	2	3	4	5	Total
ESTABLISHMENTS, CAPACITY AND EMPLOYMENT										
<i>June quarter 1995—</i>										
Establishments	10	23	20	53	11	69	105	48	9	242
Guest rooms	921	2,144	4,840	7,905	304	1,919	4,601	5,006	2,485	14,315
Bed spaces	1,965	5,667	10,854	18,486	879	4,682	12,582	12,232	5,255	35,630
Employment (persons)	257	740	4,499	5,496	188	1,180	2,029	3,290	3,149	9,836
<i>June quarter 1996—</i>										
Establishments	8	23	21	52	16	57	112	49	9	243
Guest rooms	870	2,112	5,001	7,983	457	1,543	4,601	5,469	2,474	14,544
Bed spaces	1,878	5,540	11,125	18,543	1,272	3,881	12,450	13,342	5,429	36,374
Employment (persons)	280	776	4,512	5,568	278	1,130	2,088	3,742	3,009	10,247
ROOM NIGHTS OCCUPIED ('000)										
<i>June quarter 1995</i>	44.2	130.4	322.8	497.5	9.6	78.6	248.5	328.0	154.4	819.2
<i>1996—</i>										
April	17.3	47.9	113.6	178.8	5.7	25.8	89.7	119.7	54.3	295.2
May	15.5	48.2	126.6	190.2	5.5	23.5	87.7	131.7	58.2	306.7
June	15.9	45.9	118.5	180.4	5.7	23.6	84.7	121.4	54.8	290.2
<i>June quarter 1996</i>	48.7	142.0	358.7	549.4	16.9	72.9	262.1	372.8	167.3	892.0
ROOM OCCUPANCY RATES (per cent)										
<i>June quarter 1995</i>	52.8	66.8	73.3	69.2	34.7	45.3	59.4	72.0	68.3	62.9
<i>1996—</i>										
April	66.2	75.6	75.7	74.7	41.5	55.7	65.0	73.0	73.1	67.7
May	57.4	74.3	81.6	77.1	38.7	49.2	61.8	77.7	75.9	68.1
June	61.1	73.7	79.0	75.6	41.5	51.1	61.8	74.0	73.9	66.7
<i>June quarter 1996</i>	61.5	74.5	78.8	75.8	40.5	52.0	62.9	74.9	74.3	67.5
GUEST NIGHTS ('000)										
<i>June quarter 1995</i>	72.8	213.7	479.3	765.8	16.7	127.7	397.4	478.1	217.4	1,237.4
<i>1996—</i>										
April	28.5	84.4	165.7	278.6	10.1	43.6	156.7	183.6	74.5	468.5
May	24.9	79.4	176.7	281.0	9.1	38.0	140.8	186.9	77.1	452.0
June	26.4	79.2	169.4	275.0	9.4	38.8	141.9	181.9	72.2	444.0
<i>June quarter 1996</i>	79.8	243.0	511.8	834.6	28.6	120.4	439.3	552.4	223.8	1,364.5
BED OCCUPANCY RATES (per cent)										
<i>June quarter 1995</i>	40.7	41.4	48.5	45.5	20.9	30.2	34.7	43.0	45.5	38.2
<i>1996—</i>										
April	50.6	50.8	49.7	50.1	26.5	37.5	41.9	45.9	45.7	42.9
May	42.8	46.8	51.2	49.0	23.1	31.6	36.7	45.2	45.8	40.2
June	46.9	48.6	50.7	49.7	24.6	33.4	38.3	45.4	44.3	40.8
<i>June quarter 1996</i>	46.7	48.7	50.5	49.6	24.7	34.1	39.0	45.5	45.3	41.3
GUEST ARRIVALS ('000)										
<i>June quarter 1995</i>	31.8	98.3	199.9	330.0	5.3	66.7	195.1	221.1	89.8	578.0
<i>1996—</i>										
April	12.2	36.6	69.7	118.5	4.7	21.6	71.8	88.0	29.5	215.6
May	11.5	34.5	78.4	124.4	4.5	20.4	65.6	95.6	31.3	217.5
June	11.9	35.4	72.8	120.1	4.5	20.8	67.6	89.2	28.6	210.7
<i>June quarter 1996</i>	35.6	106.5	221.0	363.0	13.7	62.9	204.9	272.9	89.4	643.8
AVERAGE LENGTH OF STAY (days)										
<i>June quarter 1995</i>	2.3	2.2	2.4	2.3	3.2	1.9	2.0	2.2	2.4	2.1
<i>June quarter 1996</i>	2.2	2.3	2.3	2.3	2.1	1.9	2.1	2.0	2.5	2.1
TAKINGS FROM ACCOMMODATION (\$'000)										
<i>June quarter 1995</i>	2,770	10,228	44,825	57,824	661	4,625	19,355	37,173	24,724	86,538
<i>1996—</i>										
April	1,246	4,183	17,492	22,922	459	1,625	7,440	14,566	9,940	34,030
May	1,123	4,221	19,607	24,951	453	1,467	7,252	16,278	10,748	36,199
June	1,148	4,020	19,915	25,083	464	1,481	6,993	15,733	10,935	35,606
<i>June quarter 1996</i>	3,517	12,425	57,014	72,956	1,376	4,573	21,685	46,577	31,623	105,834

TABLE 5 — HOTELS, MOTELS AND GUEST HOUSES WITH FACILITIES BY STAR GRADING,
MELBOURNE CITY, MELBOURNE STATISTICAL DIVISION AND VICTORIA—continued

Particulars	Victoria						Total
	Star grading						
	1	2	3	4	5	Ungraded	
ESTABLISHMENTS, CAPACITY AND EMPLOYMENT							
<i>June quarter 1995—</i>							
Establishments	15	354	511	78	9	49	1,016
Guest rooms	184	6,452	13,292	6,165	2,485	965	29,543
Bed spaces	470	18,406	39,440	15,801	5,255	2,739	82,111
Employment (persons)	198	2,922	4,972	4,099	3,149	611	15,951
<i>June quarter 1996—</i>							
Establishments	15	298	542	103	9	54	1,021
Guest rooms	196	5,298	13,558	7,241	2,474	1,240	30,007
Bed spaces	500	15,206	39,887	18,621	5,429	3,572	83,215
Employment (persons)	178	2,827	4,923	4,927	3,009	797	16,661
ROOM NIGHTS OCCUPIED ('000)							
<i>June quarter 1995</i>	2.8	206.8	589.2	391.1	154.4	27.7	1,372.1
<i>1996—</i>							
April	1.3	71.1	225.4	149.3	54.3	13.0	514.3
May	1.1	59.4	203.0	159.4	58.2	12.3	493.5
June	0.9	54.8	181.8	146.6	54.8	11.6	450.5
<i>June quarter 1996</i>	3.3	185.2	610.2	455.3	167.3	36.9	1,458.2
ROOM OCCUPANCY RATES (per cent)							
<i>June quarter 1995</i>	16.7	35.4	48.7	69.7	68.3	31.6	51.1
<i>1996—</i>							
April	21.9	44.7	55.5	68.7	73.1	35.4	57.2
May	18.8	36.3	48.5	71.0	75.9	32.5	53.2
June	15.9	34.6	44.9	67.5	73.9	31.5	50.3
<i>June quarter 1996</i>	18.9	38.5	49.6	69.1	74.3	33.1	53.5
GUEST NIGHTS ('000)							
<i>June quarter 1995</i>	4.1	362.0	1,003.1	589.3	217.4	48.5	2,224.5
<i>1996—</i>							
April	1.8	132.4	420.1	240.3	74.5	24.4	893.4
May	1.5	100.4	334.7	232.2	77.1	21.4	767.3
June	1.2	95.4	313.6	225.1	72.2	20.9	728.3
<i>June quarter 1996</i>	4.5	328.1	1,068.4	697.5	223.8	66.7	2,388.9
BED OCCUPANCY RATES (per cent)							
<i>June quarter 1995</i>	9.6	21.8	28.0	41.0	45.5	19.5	29.8
<i>1996—</i>							
April	12.2	29.0	35.2	43.0	45.7	23.0	35.8
May	9.6	21.4	27.2	40.2	45.8	19.5	29.8
June	8.5	21.0	26.4	40.3	44.3	19.7	29.3
<i>June quarter 1996</i>	10.1	23.8	29.5	41.2	45.3	20.7	31.6
GUEST ARRIVALS ('000)							
<i>June quarter 1995</i>	2.9	214.8	585.7	288.0	89.8	19.7	1,200.9
<i>1996—</i>							
April	0.9	74.6	237.5	121.5	29.5	11.1	475.2
May	0.7	59.2	191.7	124.0	31.3	10.2	417.2
June	0.7	55.6	180.2	114.9	28.6	9.4	389.4
<i>June quarter 1996</i>	2.4	189.4	609.5	360.4	89.4	30.7	1,281.8
AVERAGE LENGTH OF STAY (days)							
<i>June quarter 1995</i>	1.4	1.7	1.7	2.0	2.4	2.5	1.9
<i>June quarter 1996</i>	1.9	1.7	1.8	1.9	2.5	2.2	1.9
TAKINGS FROM ACCOMMODATION (\$'000)							
<i>June quarter 1995</i>	83	10,749	40,523	42,315	24,724	2,242	120,636
<i>1996—</i>							
April	34	3,911	16,201	17,219	9,940	1,068	48,372
May	32	3,197	14,219	18,815	10,748	973	47,985
June	24	3,052	13,143	18,064	10,935	1,141	46,359
<i>June quarter 1996</i>	90	10,160	43,562	54,098	31,623	3,182	142,716

TABLE 6 — HOTELS, MOTELS AND GUEST HOUSES WITH FACILITIES BY STATISTICAL DIVISION (a),
VICTORIA

Particulars	Melbourne (SD)			Barwon (SD)			Western District (SD)		
	Licensed hotels	Motels etc.	Total	Licensed hotels	Motels etc.	Total	Licensed hotels	Motels etc.	Total
ESTABLISHMENTS, CAPACITY AND EMPLOYMENT									
<i>June quarter 1995—</i>									
Establishments	70	172	242	16	62	78	14	63	77
Guest rooms	7,469	6,846	14,315	377	1,267	1,644	250	1,114	1,364
Bed spaces	17,259	18,371	35,630	1,203	3,797	5,000	648	3,243	3,891
Employment (persons)	7,315	2,521	9,836	489	458	947	281	383	664
<i>June quarter 1996—</i>									
Establishments	70	173	243	17	62	79	14	66	80
Guest rooms	7,659	6,885	14,544	390	1,290	1,680	252	1,155	1,407
Bed spaces	17,825	18,549	36,374	1,239	3,863	5,102	658	3,367	4,025
Employment (persons)	7,603	2,644	10,247	553	421	974	267	383	650
ROOM NIGHTS OCCUPIED ('000)									
<i>June quarter 1995</i>	466.9	352.3	819.2	15.1	46.9	62.0	7.5	45.6	53.1
<i>1996—</i>									
April	166.7	128.5	295.2	5.6	18.1	23.6	2.9	19.1	22.1
May	180.0	126.7	306.7	4.6	14.7	19.3	2.7	16.5	19.2
June	167.0	123.1	290.2	4.7	13.2	17.9	2.0	12.9	14.9
<i>June quarter 1996</i>	513.7	378.3	892.0	14.8	46.0	60.8	7.6	48.6	56.2
ROOM OCCUPANCY RATES (per cent)									
<i>June quarter 1995</i>	68.8	56.6	62.9	44.1	40.7	41.5	33.0	45.0	42.8
<i>1996—</i>									
April	72.6	62.2	67.7	47.6	46.7	46.9	38.8	55.3	52.3
May	76.0	59.4	68.1	38.1	36.8	37.1	34.1	46.2	44.0
June	73.0	59.6	66.7	39.8	34.9	36.1	26.8	37.3	35.4
<i>June quarter 1996</i>	73.9	60.4	67.5	41.8	39.5	40.0	33.3	46.2	43.9
GUEST NIGHTS ('000)									
<i>June quarter 1995</i>	688.2	549.2	1,237.4	33.2	78.4	111.6	11.6	78.6	90.2
<i>1996—</i>									
April	248.9	219.6	468.5	13.0	34.6	47.6	5.1	36.4	41.6
May	254.2	197.8	452.0	9.5	25.2	34.7	3.9	26.7	30.6
June	243.6	200.4	444.0	9.9	22.7	32.6	3.2	21.5	24.7
<i>June quarter 1996</i>	746.7	617.8	1,364.5	32.4	82.5	114.9	12.2	84.6	96.8
BED OCCUPANCY RATES (per cent)									
<i>June quarter 1995</i>	43.9	32.9	38.2	30.3	22.7	24.5	19.7	26.6	25.5
<i>1996—</i>									
April	46.5	39.5	42.9	34.9	29.9	31.1	25.9	36.1	34.4
May	46.2	34.4	40.2	24.9	21.0	22.0	19.3	25.6	24.6
June	45.8	36.0	40.8	26.7	20.0	21.7	16.1	21.3	20.4
<i>June quarter 1996</i>	46.2	36.6	41.3	28.8	23.6	24.9	20.5	27.6	26.4
GUEST ARRIVALS ('000)									
<i>June quarter 1995</i>	313.5	264.5	578.0	13.3	50.1	63.4	7.8	53.4	61.3
<i>1996—</i>									
April	116.8	98.8	215.6	5.6	21.5	27.1	3.6	25.2	28.8
May	124.2	93.3	217.5	4.1	16.1	20.2	2.7	17.7	20.4
June	116.2	94.5	210.7	4.3	13.9	18.2	2.3	15.2	17.5
<i>June quarter 1996</i>	357.1	286.6	643.8	14.0	51.4	65.4	8.6	58.0	66.6
AVERAGE LENGTH OF STAY (days)									
<i>June quarter 1995</i>	2.2	2.1	2.1	2.5	1.6	1.8	1.5	1.5	1.5
<i>June quarter 1996</i>	2.1	2.2	2.1	2.3	1.6	1.8	1.4	1.5	1.5
TAKINGS FROM ACCOMMODATION (\$'000)									
<i>June quarter 1995</i>	58,101	28,437	86,538	1,218	3,196	4,414	365	2,805	3,170
<i>1996—</i>									
April	22,778	11,252	34,030	500	1,301	1,801	149	1,243	1,392
May	25,090	11,109	36,199	572	1,012	1,584	127	1,012	1,139
June	24,799	10,806	35,606	572	914	1,486	101	800	901
<i>June quarter 1996</i>	72,667	33,167	105,834	1,644	3,228	4,871	376	3,056	3,432

**TABLE 6 — HOTELS, MOTELS AND GUEST HOUSES WITH FACILITIES BY STATISTICAL DIVISION (a),
VICTORIA—continued**

Particulars	Central Highlands (SD)			Wimmera and Mallee (SDs)		
	Licensed hotels	Motels etc.	Total	Licensed hotels	Motels etc.	Total
ESTABLISHMENTS, CAPACITY AND EMPLOYMENT						
<i>June quarter 1995—</i>						
Establishments	11	47	58	10	108	118
Guest rooms	203	980	1,183	229	2,210	2,439
Bed spaces	562	3,107	3,669	541	6,862	7,403
Employment (persons)	166	378	544	182	573	755
<i>June quarter 1996—</i>						
Establishments	12	48	60	9	110	119
Guest rooms	237	1,000	1,237	213	2,269	2,482
Bed spaces	628	3,147	3,775	487	7,044	7,531
Employment (persons)	198	414	612	161	620	781
ROOM NIGHTS OCCUPIED ('000)						
<i>June quarter 1995</i>	9.0	41.3	50.3	8.3	89.2	97.5
<i>1996—</i>						
April	3.7	16.9	20.7	2.9	35.5	38.3
May	3.2	14.1	17.3	2.4	30.8	33.2
June	3.0	12.5	15.5	2.4	27.6	30.0
<i>June quarter 1996</i>	10.0	43.5	53.4	7.6	93.9	101.5
ROOM OCCUPANCY RATES (per cent)						
<i>June quarter 1995</i>	48.9	46.3	46.7	39.7	44.4	44.0
<i>1996</i>						
April	52.2	56.5	55.7	44.7	52.1	51.5
May	44.0	45.4	45.1	36.0	43.8	43.1
June	42.3	41.8	41.9	37.4	40.6	40.3
<i>June quarter 1996</i>	46.2	47.9	47.5	39.3	45.5	44.9
GUEST NIGHTS ('000)						
<i>June quarter 1995</i>	16.4	79.4	95.8	12.2	157.1	169.3
<i>1996</i>						
April	7.4	36.0	43.4	4.7	69.8	74.5
May	5.3	26.4	31.7	3.4	51.8	55.2
June	5.4	25.2	30.6	3.6	48.7	52.3
<i>June quarter 1996</i>	18.1	87.6	105.7	11.7	170.3	182.0
BED OCCUPANCY RATES (per cent)						
<i>June quarter 1995</i>	32.0	28.1	28.7	24.8	25.2	25.2
<i>1996—</i>						
April	39.2	38.2	38.3	32.2	33.0	33.0
May	27.4	27.0	27.1	22.8	23.7	23.6
June	28.7	26.8	27.1	24.4	23.1	23.1
<i>June quarter 1996</i>	31.7	30.6	30.8	26.4	26.6	26.6
GUEST ARRIVALS ('000)						
<i>June quarter 1995</i>	11.1	52.0	63.2	7.9	104.5	112.4
<i>1996—</i>						
April	4.7	21.9	26.6	2.7	45.0	47.7
May	3.7	15.6	19.2	2.3	35.3	37.6
June	3.4	14.6	18.0	2.2	32.7	34.8
<i>June quarter 1996</i>	11.8	52.0	63.8	7.2	113.0	120.1
AVERAGE LENGTH OF STAY (days)						
<i>June quarter 1995</i>	1.5	1.5	1.5	1.5	1.5	1.5
<i>June quarter 1996</i>	1.5	1.7	1.7	1.6	1.5	1.5
TAKINGS FROM ACCOMMODATION (\$'000)						
<i>June quarter 1995</i>	683	2,735	3,418	448	4,950	5,398
<i>1996—</i>						
April	295	1,245	1,540	194	2,144	2,338
May	263	970	1,234	132	1,693	1,825
June	259	923	1,182	142	1,562	1,704
<i>June quarter 1996</i>	817	3,139	3,956	468	5,399	5,867

**TABLE 6 — HOTELS, MOTELS AND GUEST HOUSES WITH FACILITIES BY STATISTICAL DIVISION (a),
VICTORIA—continued**

Particulars	Loddon (SD) (a)			Goulburn (SD) (a)			Ovens-Murray (SD)		
	Licensed hotels	Motels etc.	Total	Licensed hotels	Motels etc.	Total	Licensed hotels	Motels etc.	Total
ESTABLISHMENTS, CAPACITY AND EMPLOYMENT									
<i>June quarter 1995—</i>									
Establishments	11	74	85	22	92	114	14	90	104
Guest rooms	151	1,393	1,544	497	1,704	2,201	277	1,816	2,093
Bed spaces	400	4,268	4,668	1,648	5,442	7,090	850	5,811	6,661
Employment (persons)	139	482	621	390	529	919	140	505	645
<i>June quarter 1996—</i>									
Establishments	11	47	58	25	117	142	13	88	101
Guest rooms	128	882	1,010	619	2,256	2,875	256	1,753	2,009
Bed spaces	318	2,752	3,070	1,915	6,916	8,831	834	5,668	6,502
Employment (persons)	133	313	446	483	706	1,189	147	589	736
ROOM NIGHTS OCCUPIED ('000)									
<i>June quarter 1995</i>	4.3	59.9	64.2	14.5	58.0	72.5	7.5	60.7	68.2
<i>1996—</i>									
April	1.3	14.2	15.5	6.7	31.1	37.8	2.5	26.0	28.5
May	1.4	13.0	14.4	5.9	28.1	34.0	2.1	20.0	22.1
June	1.2	11.4	12.7	6.1	24.6	30.7	1.7	14.0	15.7
<i>June quarter 1996</i>	3.9	38.6	42.5	18.7	83.8	102.5	6.3	60.0	66.3
ROOM OCCUPANCY RATES (per cent)									
<i>June quarter 1995</i>	31.4	47.2	45.7	32.1	37.4	36.2	29.8	37.2	36.2
<i>1996—</i>									
April	33.4	53.6	51.0	36.0	46.0	43.8	32.4	50.6	48.3
May	34.6	47.6	46.0	30.8	40.2	38.1	26.1	37.8	36.2
June	32.2	43.2	41.8	33.3	36.3	35.7	23.1	26.9	26.4
<i>June quarter 1996</i>	33.4	48.1	46.2	33.3	40.8	39.2	27.2	38.4	36.9
GUEST NIGHTS ('000)									
<i>June quarter 1995</i>	6.6	109.3	115.9	22.3	100.0	122.3	12.9	119.5	132.4
<i>1996—</i>									
April	2.2	26.7	28.9	11.4	59.7	71.1	4.3	52.7	57.0
May	2.1	21.3	23.4	9.1	47.7	56.7	3.3	36.6	39.9
June	1.9	19.9	21.8	10.0	43.2	53.2	3.4	27.9	31.4
<i>June quarter 1996</i>	6.2	67.9	74.2	30.5	150.6	181.0	11.0	117.3	128.3
BED OCCUPANCY RATES (per cent)									
<i>June quarter 1995</i>	18.2	28.1	27.3	14.8	20.2	19.0	16.6	22.9	22.1
<i>1996—</i>									
April	22.9	32.4	31.4	19.8	28.8	26.8	17.2	31.7	29.8
May	21.5	25.0	24.6	15.3	22.2	20.7	12.7	21.3	20.2
June	20.2	24.1	23.7	17.6	20.8	20.1	14.0	16.6	16.3
<i>June quarter 1996</i>	21.5	27.1	26.5	17.6	23.9	22.5	14.6	23.1	22.0
GUEST ARRIVALS ('000)									
<i>June quarter 1995</i>	3.0	75.7	78.7	14.0	64.5	78.6	7.9	62.5	70.4
<i>1996—</i>									
April	1.0	18.8	19.7	6.5	35.5	42.0	2.2	28.1	30.3
May	1.0	15.3	16.3	5.5	31.1	36.7	1.8	19.5	21.3
June	1.0	13.7	14.7	5.6	27.4	33.0	1.6	15.6	17.2
<i>June quarter 1996</i>	3.0	47.8	50.8	17.7	94.0	111.7	5.7	63.1	68.8
AVERAGE LENGTH OF STAY (days)									
<i>June quarter 1995</i>	2.2	1.4	1.5	1.6	1.6	1.6	1.6	1.9	1.9
<i>June quarter 1996</i>	2.1	1.4	1.5	1.7	1.6	1.6	1.9	1.9	1.9
TAKINGS FROM ACCOMMODATION (\$'000)									
<i>June quarter 1995</i>	270	3,927	4,197	861	3,818	4,679	328	3,737	4,065
<i>1996—</i>									
April	97	959	1,056	422	2,136	2,558	100	1,598	1,697
May	106	840	946	382	1,885	2,267	78	1,164	1,242
June	99	757	856	406	1,653	2,058	150	1,076	1,226
<i>June quarter 1996</i>	302	2,555	2,857	1,209	5,674	6,884	327	3,837	4,165

TABLE 6 — HOTELS, MOTELS AND GUEST HOUSES WITH FACILITIES BY STATISTICAL DIVISION (a),
VICTORIA—continued

Particulars	East Gippsland (SD)			Gippsland (SD)			Victoria		
	Licensed hotels	Motels etc.	Total	Licensed hotels	Motels etc.	Total	Licensed hotels	Motels etc.	Total
ESTABLISHMENTS, CAPACITY AND EMPLOYMENT									
<i>June quarter 1995—</i>									
Establishments	9	60	69	17	54	71	194	822	1,016
Guest rooms	139	1,182	1,321	244	1,195	1,439	9,836	19,707	29,543
Bed spaces	399	3,537	3,936	682	3,481	4,163	24,192	57,919	82,111
Employment (persons)	75	374	449	252	319	571	9,429	6,522	15,951
<i>June quarter 1996—</i>									
Establishments	13	64	77	13	49	62	197	824	1,021
Guest rooms	226	1,259	1,485	144	1,134	1,278	10,124	19,883	30,007
Bed spaces	567	3,739	4,306	418	3,281	3,699	24,889	58,326	83,215
Employment (persons)	100	367	467	219	340	559	9,864	6,797	16,661
ROOM NIGHTS OCCUPIED ('000)									
<i>June quarter 1995</i>	3.6	40.1	43.7	6.2	35.2	41.4	543.0	829.1	1,372.1
<i>1996—</i>									
April	2.0	16.4	18.5	1.2	13.0	14.2	195.4	318.8	514.3
May	1.4	12.9	14.3	0.9	12.1	12.9	204.5	289.0	493.5
June	1.4	10.8	12.2	1.0	9.9	10.8	190.5	260.0	450.5
<i>June quarter 1996</i>	4.8	40.2	45.0	3.0	34.9	37.9	590.4	867.8	1,458.2
ROOM OCCUPANCY RATES (per cent)									
<i>June quarter 1995</i>	28.2	37.3	36.3	27.9	32.4	31.6	60.7	46.3	51.1
<i>1996—</i>									
April	29.7	43.5	41.4	27.0	38.2	36.9	64.3	53.6	57.2
May	20.2	33.6	31.5	19.4	34.4	32.7	65.3	47.0	53.2
June	20.1	29.1	27.7	22.0	29.0	28.2	63.0	43.8	50.3
<i>June quarter 1996</i>	23.3	35.4	33.6	22.8	33.9	32.6	64.2	48.1	53.5
GUEST NIGHTS ('000)									
<i>June quarter 1995</i>		71.1	78.9	10.1	60.8	70.9	821.1	1,403.4	2,224.5
<i>1996—</i>									
April	3.8	30.3	34.1	2.2	24.6	26.7	302.9	590.5	893.4
May	2.3	20.6	22.9	1.4	18.6	20.0	294.7	472.6	767.3
June	2.2	18.0	20.2	1.6	15.9	17.5	284.9	443.4	728.3
<i>June quarter 1996</i>	8.3	68.9	77.2	5.2	59.0	64.2	882.4	1,506.5	2,388.9
BED OCCUPANCY RATES (per cent)									
<i>June quarter 1995</i>	21.3	22.1	22.0	16.2	19.2	18.7	37.3	26.7	29.8
<i>1996—</i>									
April	22.3	27.1	26.4	17.2	25.0	24.1	40.6	33.8	35.8
May	13.3	18.0	17.4	11.1	18.3	17.4	38.3	26.2	29.8
June	13.0	16.2	15.8	12.8	16.1	15.7	38.4	25.4	29.3
<i>June quarter 1996</i>	16.1	20.4	19.8	13.7	19.8	19.1	39.1	28.5	31.6
GUEST ARRIVALS ('000)									
<i>June quarter 1995</i>	4.4	47.9	52.2	6.3	36.6	42.8	389.2	811.7	1,200.9
<i>1996—</i>									
April	2.2	19.5	21.7	1.5	14.1	15.7	146.9	328.3	475.2
May	1.4	14.1	15.5	1.1	11.5	12.6	147.9	269.3	417.2
June	1.3	12.6	13.9	1.2	10.3	11.4	139.0	250.4	389.4
<i>June quarter 1996</i>	4.9	46.2	51.1	3.8	35.9	39.7	433.7	848.0	1,281.8
AVERAGE LENGTH OF STAY (days)									
<i>June quarter 1995</i>	1.8	1.5	1.5	1.6	1.7	1.7	2.1	1.7	1.9
<i>June quarter 1996</i>	1.7	1.5	1.5	1.4	1.6	1.6	2.0	1.8	1.9
TAKINGS FROM ACCOMMODATION (\$'000)									
<i>June quarter 1995</i>	191	2,313	2,504	248	2,004	2,252	62,713	57,923	120,636
<i>1996—</i>									
April	86	1,011	1,097	54	810	864	24,674	23,698	48,372
May	58	744	802	38	709	747	26,846	21,139	47,985
June	57	644	701	43	596	639	26,628	19,731	46,359
<i>June quarter 1996</i>	201	2,398	2,600	136	2,115	2,251	78,148	64,568	142,716

(a) Changed geographic boundaries effective from 1 July 1995 have affected the distribution of individual establishments among the various Statistical Divisions, including radical changes applicable for Loddon and Goulburn SDs.

TABLE 7 — HOTELS, MOTELS AND GUEST HOUSES WITH FACILITIES: STATISTICAL DIVISIONS

Statistical Divisions and selected Statistical Local Areas	Establish- ments	Guest rooms	Bed spaces	Employ- ment (persons)	Room: nights occupied				Room occupancy rates (per cent)			
					Apr.	May	June	June qtr	Apr.	May	June	June qtr
					Boroondara (C)	5	182	499	60	2,943	3,143	2,877
Cardinia (S)	4	45	116	27	549	563	584	1,696	40.7	40.4	43.3	41.4
Casey (C)	3	61	175	19	656	632	725	2,013	35.8	33.4	39.6	36.3
Darebin (C)	6	164	436	158	2,731	3,003	2,780	8,514	55.5	59.1	56.5	57.0
Frankston (C)	7	273	791	103	3,883	3,761	3,768	11,412	47.4	44.4	46.0	45.9
Greater Dandenong (C)	8	203	552	255	2,697	2,799	2,831	8,327	44.3	44.5	46.5	45.1
Hume (C)	9	490	1,409	290	10,172	10,821	10,429	31,422	69.2	71.2	70.9	70.5
Kingston (C)	5	208	588	156	3,347	3,499	2,952	9,798	53.6	54.3	47.3	51.8
Knox (C)	4	163	438	70	2,963	3,010	2,703	8,676	60.6	59.6	55.3	58.5
Manningham (C)	4	88	246	149	1,372	1,264	1,261	3,897	52.0	46.3	47.8	48.7
Maribynong (C)	3	114	310	23	1,149	1,304	1,421	3,874	33.6	36.9	41.5	37.3
Maroondah (C)	6	134	345	197	2,372	2,296	2,458	7,126	59.0	55.3	61.1	58.4
Melbourne (C)												
Inner	25	4,885	10,551	3,675	109,461	114,677	110,160	334,298	74.7	75.7	75.2	75.2
Remainder	27	3,098	7,992	1,893	69,354	75,553	70,217	215,124	74.6	79.2	76.4	76.8
Monash (C)												
South-West	5	126	376	31	2,387	2,262	2,252	6,901	63.1	57.9	59.6	60.2
Remainder	6	184	485	228	2,908	3,469	3,170	9,547	52.7	60.8	57.4	57.0
Moonee Valley (C)	5	113	299	105	1,684	1,682	1,713	5,079	49.7	48.0	50.5	49.4
Moreland (C)												
North	3	49	148	12	1,133	1,016	1,054	3,203	77.1	66.9	71.7	71.8
Remainder	4	144	451	34	2,778	2,418	2,581	7,777	64.3	54.2	59.7	59.3
Mornington Peninsula (S)												
East	4	84	253	62	832	814	797	2,443	33.0	31.3	31.6	32.0
South	18	318	876	247	3,637	2,957	2,912	9,506	38.1	30.0	30.9	33.0
West	5	73	205	94	948	938	745	2,631	43.3	41.4	34.0	39.6
Port Phillip (C)												
St. Kilda	13	584	1,528	219	12,211	11,814	11,021	35,046	69.7	65.3	62.9	65.9
West	8	1,209	3,162	969	27,034	27,600	25,320	79,954	74.5	73.6	69.8	72.7
Stonnington (C)	9	339	899	194	6,551	6,286	6,104	18,941	64.4	59.8	60.0	61.4
Whitehorse (C)												
Nunawading West	3	90	204	39	1,628	1,561	1,524	4,713	60.3	55.9	56.4	57.5
Remainder	4	128	335	185	2,611	2,732	2,443	7,786	68.0	68.9	63.6	66.8
Wyndham (C)	4	95	292	105	1,747	1,486	1,491	4,724	61.3	50.5	52.3	54.6
Yarra Ranges (S) — Part A												
Central	5	141	282	104	1,648	1,755	1,621	5,024	39.0	40.2	38.3	39.2
North	8	83	315	67	1,115	977	755	2,847	44.8	38.0	30.3	37.7
South-West	7	210	587	154	2,211	2,211	1,935	6,357	35.1	34.0	30.7	33.3
Balance	16	466	1,229	323	8,476	8,366	7,561	24,403	60.6	57.9	54.1	57.5
Melbourne (SD)	243	14,544	36,374	10,247	295,188	306,669	290,165	892,022	67.7	68.1	66.7	67.5
Colac-Otway (S)												
South	13	202	592	75	3,263	1,891	1,640	6,794	53.8	30.2	27.1	37.0
Remainder	6	115	329	81	1,607	1,477	1,395	4,479	46.6	41.4	40.4	42.8
Greater Geelong (C) — Part A												
Geelong	8	328	973	176	4,619	5,035	4,452	14,106	46.9	49.5	45.2	47.3
Geelong West	4	84	236	34	1,665	1,641	1,582	4,888	66.1	63.0	62.8	63.9
South Barwon — Inner	9	147	478	64	1,786	1,503	1,506	4,795	40.5	33.0	34.1	35.8
Remainder	6	114	366	66	1,165	1,134	1,037	3,336	34.1	32.1	30.3	32.2
Greater Geelong (C) — Parts B and C	9	126	408	125	1,105	731	589	2,425	29.2	18.7	15.6	21.1
Queenscliffe (B)	5	103	255	81	1,452	1,099	1,244	3,795	47.0	34.4	40.3	40.5
Surf Coast (S)												
East	9	159	480	61	1,945	1,120	1,130	4,195	40.8	22.7	23.7	29.0
West	10	302	985	211	5,026	3,710	3,278	12,014	55.5	39.6	40.2	45.2
Barwon (SD)	79	1,680	5,102	974	23,633	19,341	17,853	60,827	46.9	37.1	36.1	40.0
Corangamite (S)												
North	7	86	221	32	1,128	1,163	926	3,217	43.7	43.6	35.9	41.1
South	8	96	297	50	1,864	1,168	902	3,934	64.7	39.2	31.3	45.0
Glenside (S)												
Portland	11	228	678	115	3,659	3,687	2,734	10,080	53.5	52.2	40.0	48.6
Remainder	7	90	213	42	705	549	452	1,706	26.1	19.7	16.7	20.8
Moyne (S)												
South-West	8	104	295	58	1,783	1,109	819	3,711	57.1	34.4	26.3	39.2
Remainder	3	27	75	8	292	187	149	628	36.0	22.3	18.4	25.6
South Grampians (S)												
Hamilton	8	146	409	73	1,951	1,933	1,491	5,375	44.5	42.7	34.0	40.5
Remainder	4	74	225	38	1,305	986	975	3,266	58.8	43.0	43.9	48.5
Warrnambool (C)	24	556	1,612	234	9,396	8,419	6,487	24,302	56.3	48.8	38.9	48.0
Western District (SD)	80	1,407	4,025	650	22,083	19,201	14,935	56,219	52.3	44.0	35.4	43.9
Ararat (RC)	7	109	327	26	1,823	1,345	1,235	4,403	55.7	39.8	37.8	44.4
Ballarat (C)												
Central	22	649	2,072	315	11,352	10,323	8,948	30,623	58.3	51.3	46.0	51.9
Remainder	10	218	701	101	3,629	2,304	2,100	8,033	55.5	34.1	32.1	40.5
Hepburn (S)	14	184	461	132	2,798	2,381	2,359	7,538	50.7	41.7	44.2	45.5
Balance	7	77	214	38	1,052	957	815	2,824	45.5	40.1	35.3	40.3
Central Highlands (SD)	60	1,237	3,775	612	20,654	17,310	15,457	53,421	55.7	45.1	41.9	47.5
Hindmarsh (S)	6	93	259	21	1,099	1,010	676	2,785	39.4	35.0	24.2	32.9
Horsham (RC)	15	317	964	81	4,951	4,618	3,948	13,517	52.1	47.0	41.5	46.9
North Grampians (S)												
St Arnaud	4	41	114	11	508	469	399	1,376	41.3	36.9	32.4	36.9
Stawell	18	347	1,118	120	5,672	3,836	3,276	12,784	54.5	35.7	31.5	40.5
West Wimmera (S)	3	41	123	8	533	556	367	1,456	43.3	43.7	29.8	39.0
Yarriambiack (S)	4	41	120	13	515	311	312	1,138	41.9	24.5	25.4	30.5
Wimmera (SD)	50	880	2,698	254	13,278	10,800	8,978	33,056	50.3	39.6	34.0	41.3

AND SELECTED STATISTICAL LOCAL AREAS, VICTORIA, JUNE QUARTER 1996

<i>Guest nights</i>				<i>Guest arrivals</i>				<i>Takings from accommodation (\$'000)</i>			
<i>Apr.</i>	<i>May</i>	<i>June</i>	<i>June qtr</i>	<i>Apr.</i>	<i>May</i>	<i>June</i>	<i>June qtr</i>	<i>Apr.</i>	<i>May</i>	<i>June</i>	<i>June qtr</i>
4,809	4,812	4,829	14,450	2,173	2,059	2,116	6,348	290	307	286	883
959	892	933	2,784	593	648	590	1,831	30	30	27	87
1,113	990	961	3,064	683	621	637	1,941	41	37	44	122
4,522	4,339	4,430	13,291	2,655	2,566	2,600	7,821	220	227	207	655
6,933	6,089	6,145	19,167	2,826	2,394	2,632	7,852	273	268	265	807
3,818	3,707	3,966	11,491	2,215	2,193	2,243	6,651	202	209	221	632
15,735	14,604	15,393	45,732	9,889	9,696	10,233	29,818	927	960	948	2,835
4,914	4,730	4,215	13,859	2,445	2,391	2,200	7,036	330	347	291	968
4,517	3,927	3,888	12,332	1,684	1,781	1,856	5,321	277	288	258	823
1,913	1,757	1,630	5,300	950	946	974	2,870	114	103	105	323
1,658	1,781	2,030	5,469	1,514	1,641	1,890	5,045	78	86	83	246
3,532	3,086	3,430	10,048	1,735	1,657	1,647	5,039	172	170	179	521
164,067	162,010	162,482	488,559	69,934	71,135	69,229	210,298	14,459	15,942	15,723	46,124
114,578	118,953	112,479	346,010	48,527	53,265	50,900	152,692	8,462	9,009	9,360	26,831
4,401	3,910	4,132	12,443	1,636	1,448	1,576	4,660	207	194	190	592
3,738	4,108	3,676	11,522	1,515	1,708	1,673	4,896	315	361	342	1,018
2,913	3,140	3,117	9,170	1,371	1,381	1,332	4,084	148	139	143	430
2,209	1,850	1,918	5,977	1,411	1,333	1,204	3,948	79	70	73	222
5,595	4,106	4,767	14,468	1,753	1,431	1,537	4,721	218	183	195	596
1,701	1,202	1,373	4,276	685	594	890	2,169	59	56	54	169
6,888	5,002	4,801	16,691	4,115	3,042	3,038	10,195	394	318	308	1,020
1,594	1,541	1,274	4,409	764	830	715	2,309	69	63	51	183
20,488	18,008	17,437	55,933	9,487	7,834	8,501	25,822	1,096	1,075	973	3,143
41,484	37,446	37,165	116,095	20,959	21,780	19,281	62,020	3,033	3,219	2,955	9,207
11,314	9,987	10,537	31,838	4,531	4,314	3,920	12,765	868	820	775	2,463
2,733	2,792	2,535	8,060	1,668	1,555	1,426	4,649	134	137	131	401
3,796	3,860	3,681	11,337	2,059	1,872	1,944	5,875	207	218	190	615
2,987	2,375	2,456	7,818	1,679	1,627	1,731	5,037	111	91	93	294
2,405	2,648	2,411	7,464	1,359	1,739	1,473	4,571	149	167	159	475
2,659	2,625	1,788	7,072	1,598	1,827	1,354	4,779	72	64	54	190
4,047	2,873	2,529	9,449	2,088	1,650	1,619	5,357	160	175	159	494
14,441	12,886	11,618	38,945	9,130	8,508	7,697	25,335	835	866	762	2,464
468,461	452,036	444,026	1,364,523	215,631	217,466	210,658	643,755	34,030	36,199	35,606	105,834
6,726	3,594	3,268	13,588	4,731	2,701	2,199	9,631	263	129	122	513
2,619	2,377	1,941	6,937	1,700	1,702	1,592	4,994	76	75	62	213
7,072	7,108	6,279	20,459	3,712	3,909	2,987	10,608	361	411	382	1,154
2,701	2,401	2,183	7,285	1,543	1,513	1,192	4,248	119	125	111	355
3,314	2,592	2,594	8,500	2,020	1,676	1,567	5,263	118	92	93	302
2,118	1,813	1,745	5,676	1,529	1,314	1,110	3,953	73	69	61	202
2,456	1,355	1,221	5,032	1,292	948	863	3,103	71	43	40	153
2,963	1,850	2,223	7,036	1,860	1,207	1,333	4,400	103	72	91	266
4,190	2,317	2,427	8,934	2,420	1,261	1,228	4,909	147	70	69	287
13,420	9,312	8,754	31,486	6,253	3,940	4,102	14,295	471	499	456	1,426
47,579	34,719	32,635	114,933	27,060	20,171	18,173	65,404	1,801	1,584	1,486	4,871
2,065	1,597	1,533	5,195	1,419	1,053	998	3,470	60	53	48	161
3,749	2,176	1,754	7,679	3,191	1,894	1,478	6,563	139	83	66	288
6,470	5,951	4,290	16,711	4,009	3,244	2,525	9,778	204	192	153	548
1,516	1,063	865	3,444	1,151	827	626	2,604	37	28	22	88
3,544	1,859	1,459	6,862	2,382	1,284	1,070	4,736	123	75	59	257
625	370	313	1,308	442	282	270	994	17	9	8	35
3,638	2,766	2,320	8,724	2,552	1,994	1,766	6,312	112	102	83	297
2,474	1,460	1,469	5,403	1,629	1,023	1,103	3,755	84	63	63	210
17,471	13,396	10,654	41,521	12,035	8,750	7,618	28,403	615	535	398	1,548
41,552	30,638	24,657	96,847	28,810	20,351	17,454	66,615	1,392	1,139	901	3,432
3,048	2,020	1,876	6,944	2,225	1,510	1,550	5,285	112	81	79	272
25,539	20,070	18,963	64,572	14,866	10,949	9,822	35,637	855	703	648	2,206
8,272	4,199	4,341	16,812	5,148	3,071	2,964	11,183	261	154	154	568
4,507	3,772	3,914	12,193	2,849	2,470	2,452	7,771	251	221	232	704
2,065	1,632	1,525	5,222	1,515	1,245	1,207	3,967	60	75	70	206
43,431	31,693	30,619	105,743	26,603	19,245	17,995	63,843	1,540	1,234	1,182	3,956
2,249	1,765	1,255	5,269	1,917	1,490	996	4,403	56	49	35	140
8,995	6,976	6,418	22,389	7,311	5,466	5,221	17,998	325	272	241	838
764	608	560	1,932	556	500	471	1,527	22	19	16	58
13,002	7,672	6,701	27,375	7,380	5,049	3,863	16,292	381	213	188	782
876	815	544	2,235	611	540	367	1,518	23	23	14	60
1,034	467	524	2,025	765	393	412	1,570	25	14	14	52
26,920	18,303	16,002	61,225	18,540	13,438	11,330	43,308	831	590	509	1,930

TABLE 7 — HOTELS, MOTELS AND GUEST HOUSES WITH FACILITIES: STATISTICAL DIVISIONS

Statistical Divisions and selected Statistical Local Areas	Establish- ments	Guest rooms	Bed spaces	Employ- ment (persons)	Room nights occupied				Room occupancy rates (per cent)				
					Apr.	May	June	June qtr	Apr.	May	June	June qtr	
Buloke (S)													
North	3	37	106	4	358	369	428	1,155	32.3	32.2	38.6	34.3	
South	4	56	166	18	576	680	654	1,910	34.3	39.2	38.9	37.5	
Gannawarra (S)	5	95	238	39	882	692	728	2,302	30.9	23.5	25.5	26.6	
Mildura (RC)													
Part A	33	927	2,818	300	15,254	13,174	12,258	40,686	54.9	45.8	44.1	48.2	
Part B	3	41	112	14	872	676	636	2,184	70.9	53.2	51.7	58.5	
Swan Hill (RC)													
Central	15	356	1,074	131	6,173	5,863	5,296	17,332	57.8	53.1	49.6	53.5	
Balance	6	90	319	21	946	922	1,027	2,895	35.0	33.0	38.0	35.3	
<i>Mallee (SD)</i>	<i>69</i>	<i>1,602</i>	<i>4,833</i>	<i>527</i>	<i>25,061</i>	<i>22,376</i>	<i>21,027</i>	<i>68,464</i>	<i>52.1</i>	<i>45.1</i>	<i>43.8</i>	<i>47.0</i>	
Central Goldfields (S)	9	93	252	35	1,029	833	797	2,659	36.9	28.9	28.6	31.4	
Greater Bendigo (C) — Part A													
Central	23	498	1,543	221	9,271	8,547	7,455	25,273	62.1	55.4	49.9	55.8	
Remainder	5	151	488	84	2,306	2,110	1,877	6,293	50.9	45.1	41.4	45.8	
Greater Bendigo (C) — Part B	4	40	137	18	324	416	255	995	27.0	33.5	21.3	27.3	
Loddon (S)	4	49	165	10	415	430	417	1,262	28.2	28.3	28.4	28.3	
Macedon Ranges (S)													
Kyneton	3	26	75	7	380	382	390	1,152	48.7	47.4	50.0	48.7	
Remainder	4	75	192	51	749	910	821	2,480	33.3	39.1	36.5	36.3	
Mount Alexander (S)	6	78	218	20	980	763	651	2,394	41.9	31.6	27.8	33.7	
<i>Loddon (SD)</i>	<i>58</i>	<i>1,010</i>	<i>3,070</i>	<i>446</i>	<i>15,454</i>	<i>14,391</i>	<i>12,663</i>	<i>42,508</i>	<i>51.0</i>	<i>46.0</i>	<i>41.8</i>	<i>46.2</i>	
Campaspe (S)													
Echuca	19	414	1,254	157	7,861	6,818	6,064	20,743	63.3	53.1	48.8	55.1	
Remainder	7	98	277	42	1,382	1,204	1,088	3,674	47.0	39.6	40.3	42.3	
Delatite (S)													
Benalla	8	132	419	26	2,008	2,333	1,896	6,237	50.7	57.0	47.9	51.9	
Remainder (a)	24	593	2,080	246	3,768	3,060	3,340	10,168	21.2	16.6	18.8	18.8	
Greater Shepparton (C)	25	584	1,680	298	8,513	8,199	7,296	24,008	48.6	45.3	41.6	45.2	
Mitchell (S)													
North	6	106	333	51	1,984	1,822	1,523	5,329	62.4	55.4	47.9	55.2	
South	4	54	159	9	695	676	551	1,922	42.9	40.4	34.0	39.1	
Moura (S)	16	280	837	64	4,194	3,773	3,248	11,215	49.9	43.5	38.7	44.0	
Murrumbidgee (S)													
East	23	500	1,440	262	5,886	5,001	4,795	15,682	39.2	32.3	32.0	34.5	
West	3	26	72	13	324	241	223	788	41.5	29.9	28.6	33.3	
Strathbogie (S)	7	88	280	21	1,178	855	681	2,714	44.6	31.3	25.8	33.9	
<i>Goulburn (SD)</i>	<i>142</i>	<i>2,875</i>	<i>8,831</i>	<i>1,189</i>	<i>37,793</i>	<i>33,982</i>	<i>30,705</i>	<i>102,480</i>	<i>43.8</i>	<i>38.1</i>	<i>35.7</i>	<i>39.2</i>	
Alpine (S)													
East (a)	52	1,133	3,917	435	12,729	8,871	5,715	27,315	38.8	26.2	17.2	27.4	
West	3	62	194	13	1,115	1,282	662	3,059	59.9	66.7	35.6	54.2	
Indigo (S)													
Part A	7	100	283	37	2,176	1,577	1,028	4,781	72.5	50.9	34.3	52.5	
Part B	6	66	191	17	1,281	942	627	2,850	64.7	46.0	31.7	47.5	
Milawa (S)	16	331	940	140	5,640	4,912	3,941	14,493	56.8	47.9	39.7	48.1	
Towong (S)	6	97	316	35	1,345	1,112	693	3,150	46.2	37.0	23.8	35.7	
Wodonga (RC)	11	220	661	59	4,220	3,426	3,030	10,676	63.9	50.2	45.9	53.3	
<i>Ovens-Murray (SD)</i>	<i>101</i>	<i>2,009</i>	<i>6,502</i>	<i>736</i>	<i>28,506</i>	<i>22,122</i>	<i>15,696</i>	<i>66,324</i>	<i>48.3</i>	<i>36.2</i>	<i>26.4</i>	<i>36.9</i>	
East Gippsland (S)													
Bairnsdale	39	772	2,295	261	10,452	7,804	6,197	24,453	45.1	32.6	26.8	34.8	
Orbost	12	169	543	52	2,195	1,651	1,278	5,124	43.3	31.5	25.2	33.3	
Remainder	4	46	159	18	544	296	337	1,177	39.4	20.8	24.4	28.1	
Wellington (S)													
Alberton	5	77	216	21	785	454	464	1,703	34.0	19.0	20.1	24.3	
Rosedale	13	376	972	96	4,037	3,688	3,532	11,257	35.8	33.4	32.8	34.0	
Remainder	4	45	121	19	447	424	379	1,250	33.1	30.4	28.1	30.5	
<i>East Gippsland (SD)</i>	<i>77</i>	<i>1,485</i>	<i>4,306</i>	<i>467</i>	<i>18,460</i>	<i>14,317</i>	<i>12,187</i>	<i>44,964</i>	<i>41.4</i>	<i>31.5</i>	<i>27.7</i>	<i>33.6</i>	
Bass Coast (S)													
Phillip Island	11	283	944	144	3,880	2,369	1,816	8,065	45.7	27.0	21.4	31.3	
Balance	7	83	242	37	959	655	741	2,355	38.5	25.5	29.8	31.2	
Baw Baw (S)	12	203	553	95	1,651	2,141	1,142	4,934	27.1	34.0	18.8	26.7	
La Trobe (S)													
Traralgon	10	244	605	98	2,814	2,909	2,763	8,486	38.4	38.5	37.7	38.2	
Remainder	12	301	883	136	2,945	3,526	2,911	9,382	32.6	37.8	32.2	34.3	
South Gippsland (S)													
East	6	93	274	27	1,120	591	635	2,346	40.1	20.5	22.8	27.7	
Remainder	4	71	198	22	795	754	812	2,361	37.3	34.3	38.1	36.5	
<i>Gippsland (SD)</i>	<i>62</i>	<i>1,278</i>	<i>3,699</i>	<i>559</i>	<i>14,164</i>	<i>12,945</i>	<i>10,820</i>	<i>37,929</i>	<i>36.9</i>	<i>32.7</i>	<i>28.2</i>	<i>32.6</i>	
<i>Total Victoria</i>	<i>1,021</i>	<i>30,007</i>	<i>83,215</i>	<i>16,661</i>	<i>514,274</i>	<i>493,454</i>	<i>450,486</i>	<i>1,458,214</i>	<i>57.2</i>	<i>53.2</i>	<i>50.3</i>	<i>53.5</i>	

(a) Snow field resorts are included continuously as capacity (potentially) available irrespective of any off season closures. The average occupancy rates of establishments in Alpine (S) and Delatite (S) actually remaining open during the snow fields off season, therefore, are significantly higher than the overall rates published.

AND SELECTED STATISTICAL LOCAL AREAS, VICTORIA, JUNE QUARTER 1996 (a)—continued

Guest nights				Guest arrivals				Takings from accommodation (\$'000)			
Apr.	May	June	June qtr	Apr.	May	June	June qtr	Apr.	May	June	June qtr
536	485	649	1,670	433	424	562	1,419	15	15	18	49
1,089	1,214	1,104	3,407	877	914	854	2,645	28	34	31	93
1,532	911	852	3,295	1,147	894	650	2,691	48	38	38	123
29,111	21,598	21,486	72,195	16,376	13,078	13,229	42,683	949	745	714	2,408
1,425	1,180	1,035	3,640	1,116	947	877	2,940	35	31	27	92
12,180	9,823	9,322	31,325	8,062	6,825	6,169	21,056	384	334	320	1,038
1,680	1,692	1,851	5,223	1,114	1,120	1,151	3,385	48	39	48	134
47,553	36,903	36,299	120,755	29,125	24,202	23,492	76,819	1,506	1,235	1,195	3,937
1,660	1,241	1,213	4,114	1,073	875	801	2,749	52	42	38	132
17,537	13,964	13,103	44,604	11,855	9,675	8,721	30,251	652	572	524	1,747
4,381	3,562	3,280	11,223	3,062	2,559	2,203	7,824	180	161	142	483
589	624	398	1,611	366	258	182	806	15	18	11	44
794	664	648	2,106	474	316	400	1,190	19	18	15	52
688	635	709	2,032	524	480	531	1,535	17	16	18	51
1,269	1,305	1,242	3,816	926	950	912	2,788	56	71	65	191
1,989	1,425	1,251	4,665	1,441	1,210	967	3,618	65	49	43	157
28,907	23,420	21,844	74,171	19,721	16,323	14,717	50,761	1,056	946	856	2,857
16,103	12,261	11,266	39,630	10,188	8,901	7,829	26,918	564	465	419	1,448
2,620	1,781	1,601	6,002	1,301	1,346	1,063	3,710	81	63	57	201
3,525	3,768	3,273	10,566	2,432	2,222	2,010	6,664	111	125	101	338
8,204	5,636	7,008	20,848	4,907	3,469	3,207	11,583	330	282	294	906
14,594	12,313	11,337	38,244	8,565	8,108	7,444	24,117	546	516	450	1,512
3,497	2,801	2,395	8,693	2,514	2,030	1,818	6,362	135	121	110	367
1,270	1,194	1,023	3,487	1,137	1,008	820	2,965	33	32	27	92
8,013	6,519	5,533	20,065	3,539	3,202	3,041	9,782	195	165	157	517
10,299	8,520	8,049	26,868	5,185	4,866	4,460	14,511	487	441	396	1,324
674	461	409	1,544	535	414	372	1,321	15	11	10	36
2,298	1,480	1,321	5,099	1,725	1,094	964	3,783	61	46	36	144
71,097	56,734	53,215	181,046	42,028	36,660	33,028	111,716	2,558	2,267	2,058	6,884
26,632	17,799	13,812	58,243	12,084	8,047	6,227	26,358	801	531	684	2,016
1,904	1,622	1,135	4,661	1,022	747	564	2,333	56	47	33	136
4,486	3,108	2,159	9,753	2,870	2,070	1,469	6,409	136	100	66	302
2,701	1,883	1,250	5,834	1,763	1,183	847	3,793	65	45	32	141
10,026	7,751	6,341	24,118	5,781	4,619	3,896	14,296	341	295	227	864
3,002	2,067	1,336	6,405	1,679	1,046	824	3,549	73	63	36	172
8,242	5,674	5,322	19,238	5,082	3,599	3,331	12,012	225	160	148	533
56,993	39,904	31,355	128,252	30,281	21,311	17,158	68,750	1,697	1,242	1,226	4,165
20,038	13,367	11,173	44,578	12,664	9,166	8,057	29,887	634	433	364	1,432
4,588	2,900	2,240	9,728	3,046	1,941	1,577	6,564	121	84	65	271
1,068	501	615	2,184	573	306	308	1,187	35	18	17	70
1,420	695	746	2,861	910	510	538	1,958	35	20	20	76
6,319	4,885	4,823	16,027	3,987	3,090	3,013	10,090	248	228	217	693
696	562	560	1,818	522	440	452	1,414	23	18	17	58
34,129	22,910	20,157	77,196	21,702	15,453	13,945	51,100	1,097	802	701	2,600
9,296	4,661	4,268	18,225	4,818	3,032	2,457	10,307	297	174	137	608
2,004	1,180	1,289	4,473	1,536	968	930	3,434	53	34	39	126
3,462	3,400	1,898	8,760	2,137	1,992	1,538	5,667	95	122	63	280
3,965	3,759	3,692	11,416	2,308	2,317	2,411	7,036	145	153	156	454
4,411	4,742	3,936	13,089	2,779	2,917	2,562	8,258	166	191	163	520
2,217	957	1,099	4,273	1,244	668	884	2,796	68	34	40	142
1,391	1,303	1,294	3,988	857	669	659	2,185	41	40	41	122
26,746	20,002	17,476	64,224	15,679	12,563	11,441	39,683	864	747	639	2,251
893,368	767,262	728,285	2,388,915	475,180	417,183	389,391	1,281,754	48,372	47,985	46,359	142,716

TABLE 8 — HOLIDAY FLATS, UNITS AND HOUSES BY STATISTICAL DIVISION (a), VICTORIA

Particulars	Melbourne (SD)	Barwon (SD)	Western District (SD)	Wimmera (SD)	Mallee (SD)	Loddon (SD)
			and Central Highlands (SD)			
LETTING ENTITIES, CAPACITY AND EMPLOYMENT						
June quarter 1995—						
Letting entities	41	23	17	10	8	5
Flats, units and houses						
Single bedroom	735	43	26	52	14	9
Multiple bedroom	667	360	119	65	74	25
Total flats, units and houses	1,402	403	145	117	88	34
Bed spaces	4,936	2,032	675	508	397	161
Employment (persons) (b)	313	61	40	32	17	11
June quarter 1996—						
Letting entities	40	26	18	10	7	4
Flats, units and houses						
Single bedroom	781	47	33	52	14	8
Multiple bedroom	682	393	118	67	59	21
Total flats, units and houses	1,463	440	151	119	73	29
Bed spaces	4,944	2,276	655	524	323	139
Employment (persons) (b)	319	76	44	37	18	7
UNIT NIGHTS OCCUPIED						
June quarter 1995	75,635	8,582	4,481	5,659	4,418	1,910
1996—						
April	30,046	4,562	2,654	2,847	1,418	565
May	27,926	2,231	1,712	1,642	1,302	429
June	27,694	2,439	1,596	1,384	1,162	467
June quarter 1996	85,666	9,232	5,962	5,873	3,882	1,461
UNIT OCCUPANCY RATES (per cent)						
June quarter 1995	59.3	23.4	34.0	53.2	58.7	61.7
1996—						
April	68.5	34.6	58.6	79.7	64.7	64.9
May	61.8	16.4	36.6	44.5	57.5	47.7
June	63.1	18.5	35.2	38.8	53.1	53.7
June quarter 1996	64.4	23.1	43.4	54.2	58.4	55.4
UNIT LETTINGS						
June quarter 1995	14,864	2,773	1,519	1,876	1,075	581
1996—						
April	6,874	1,362	1,072	894	369	173
May	5,791	951	777	678	273	140
June	6,295	1,032	693	585	297	156
June quarter 1996	18,960	3,345	2,542	2,157	939	469
AVERAGE LENGTH OF STAY (days)						
June quarter 1995	5.1	3.1	2.9	3.0	4.1	3.3
1996—						
April	4.4	3.3	2.5	3.2	3.8	3.3
May	4.8	2.3	2.2	2.4	4.8	3.1
June	4.4	2.4	2.3	2.4	3.9	3.0
June quarter 1996	4.5	2.8	2.3	2.7	4.1	3.1
TAKINGS FROM ACCOMMODATION (\$'000)						
June quarter 1995	6,923	635	287	405	241	91
1996—						
April	2,992	351	178	219	93	28
May	2,810	186	123	113	62	22
June	2,825	209	122	108	63	22
June quarter 1996	8,626	745	422	441	218	72

TABLE 8 — HOLIDAY FLATS, UNITS AND HOUSES BY STATISTICAL DIVISION (a), VICTORIA—continued

Particulars	Victoria						Total
	Goulburn (SD)	Ovens- Murray (SD)	East Gippsland (SD)	Gippsland (SD)	Real estate agents	Other letting entities	
LETTING ENTITIES, CAPACITY AND EMPLOYMENT							
June quarter 1995—							
Letting entities	9	44	52	10	24	195	219
Flats, units and houses							
Single bedroom	29	107	89	35	53	1,086	1,139
Multiple bedroom	45	364	466	235	804	1,616	2,420
Total flats, units and houses	74	471	555	270	857	2,702	3,559
Bed spaces	383	2,552	2,693	1,577	4,815	11,099	15,914
Employment (persons) (b)	25	111	122	58	—	790	790
June quarter 1996							
Letting entities	13	44	52	10	24	200	224
Flats, units and houses							
Single bedroom	34	109	109	36	50	1,173	1,223
Multiple bedroom	67	425	449	259	804	1,736	2,540
Total flats, units and houses	101	534	558	295	854	2,909	3,763
Bed spaces	498	2,917	2,549	1,736	4,909	11,652	16,561
Employment (persons) (b)	44	135	118	45	—	843	843
UNIT NIGHTS OCCUPIED							
June quarter 1995	2,291	10,846	13,207	5,114	7,727	124,416	132,143
1996—							
April	1,450	6,151	7,230	2,344	4,487	54,780	59,267
May	912	3,447	3,515	628	1,485	42,259	43,744
June	689	2,524	3,323	703	1,786	40,195	41,981
June quarter 1996	3,051	12,122	14,068	3,675	7,758	137,234	144,992
UNIT OCCUPANCY RATES (per cent)							
June quarter 1995	34.0	25.3	26.1	20.8	9.9	50.7	40.9
1996—							
April	47.9	38.4	43.2	26.5	17.5	62.8	52.5
May	29.1	20.8	20.3	6.9	5.6	47.0	37.6
June	22.7	16.0	19.9	7.9	7.0	46.2	37.3
June quarter 1996	33.2	25.1	27.7	13.7	10.0	51.9	42.4
UNIT LETTINGS							
June quarter 1995	890	3,136	3,727	1,517	1,365	30,593	31,958
1996—							
April	473	1,693	1,778	552	758	14,482	15,240
May	326	1,020	1,046	236	217	11,021	11,238
June	289	822	1,112	259	410	11,130	11,540
June quarter 1996	1,088	3,535	3,936	1,047	1,385	36,633	38,018
AVERAGE LENGTH OF STAY (days)							
June quarter 1995	2.6	3.5	3.5	3.4	5.7	4.1	4.1
1996—							
April	3.1	3.6	4.1	4.2	5.9	3.8	3.9
May	2.8	3.4	3.4	2.7	6.8	3.8	3.9
June	2.4	3.1	3.0	2.7	4.4	3.6	3.6
June quarter 1996	2.8	3.4	3.6	3.5	5.6	3.7	3.8
TAKINGS FROM ACCOMMODATION (\$'000)							
June quarter 1995	179	617	733	308	503	9,916	10,420
1996—							
April	91	359	436	157	276	4,627	4,903
May	82	182	182	42	76	3,728	3,803
June	54	180	198	44	113	3,713	3,825
June quarter 1996	227	722	816	242	464	12,067	12,531

(a) Changed geographic boundaries effective from 1 July 1995 have affected the distribution of individual letting entities among the various Statistical Divisions.

(b) Employment numbers exclude real estate agents and their employees.

TABLE 9 — CARAVAN PARKS BY STATISTICAL DIVISION (a), VICTORIA

Particulars	Melbourne (SD)			Barwon (SD)			Western District (SD)		
	Short-term	Long-term	Total	Short-term	Long-term	Total	Short-term	Long-term	Total
ESTABLISHMENTS, CAPACITY AND EMPLOYMENT									
<i>June quarter 1995—</i>									
Establishments	53	39	92	53	11	64	30	14	44
Capacity									
On-site vans	218	736	954	144	135	279	76	89	165
Other powered sites	4,276	2,533	6,809	8,040	675	8,715	3,076	500	3,576
Unpowered sites	993	291	1,284	815	75	890	1,402	178	1,580
Cabins, flats, etc.	237	479	716	383	84	467	211	67	278
<i>Total capacity</i>	<i>5,724</i>	<i>4,039</i>	<i>9,763</i>	<i>9,382</i>	<i>969</i>	<i>10,351</i>	<i>4,765</i>	<i>834</i>	<i>5,599</i>
Sites occupied by long-term guests	313	2,278	2,591	147	394	541	42	145	187
Other sites permanently reserved	1,985	52	2,037	3,522	20	3,542	165	15	180
Employment (persons)	144	165	309	207	37	244	72	44	116
<i>June quarter 1996—</i>									
Establishments	54	38	92	51	12	63	30	15	45
Capacity									
On-site vans	233	631	864	181	153	334	75	81	156
Other powered sites	4,417	2,510	6,927	7,973	681	8,654	3,128	538	3,666
Unpowered sites	961	265	1,226	829	70	899	1,260	180	1,440
Cabins, flats, etc.	241	631	872	344	96	440	281	71	352
<i>Total capacity</i>	<i>5,852</i>	<i>4,037</i>	<i>9,889</i>	<i>9,327</i>	<i>1,000</i>	<i>10,327</i>	<i>4,744</i>	<i>870</i>	<i>5,614</i>
Sites occupied by long-term guests	354	2,367	2,721	154	445	599	29	124	153
Other sites permanently reserved	1,991	135	2,126	3,641	30	3,671	170	25	195
Employment (persons)	158	155	313	224	48	272	83	55	138
SITE NIGHTS OCCUPIED ('000)									
<i>June quarter 1995</i>	<i>245.0</i>	<i>249.6</i>	<i>494.6</i>	<i>398.9</i>	<i>48.5</i>	<i>447.4</i>	<i>44.8</i>	<i>20.9</i>	<i>65.7</i>
<i>1996—</i>									
April	86.6	86.2	172.8	148.6	16.6	165.1	22.6	7.8	30.4
May	80.7	88.1	168.8	121.4	16.3	137.7	13.1	6.1	19.1
June	77.1	85.2	162.3	120.0	15.6	135.6	11.2	5.7	16.9
<i>June quarter 1996</i>	<i>244.3</i>	<i>259.6</i>	<i>503.9</i>	<i>390.0</i>	<i>48.4</i>	<i>438.5</i>	<i>46.9</i>	<i>19.6</i>	<i>66.4</i>
SITE OCCUPANCY RATES (per cent)									
<i>June quarter 1995</i>	<i>47.0</i>	<i>67.9</i>	<i>55.7</i>	<i>46.7</i>	<i>55.0</i>	<i>47.5</i>	<i>10.3</i>	<i>27.6</i>	<i>12.9</i>
<i>1996—</i>									
April	49.3	71.2	58.2	53.1	55.3	53.3	15.9	29.9	18.1
May	45.9	70.4	56.1	42.0	52.6	43.0	8.9	22.5	11.0
June	45.3	70.4	55.7	42.9	51.8	43.8	7.9	21.7	10.0
<i>June quarter 1996</i>	<i>46.9</i>	<i>70.7</i>	<i>56.7</i>	<i>46.0</i>	<i>53.2</i>	<i>46.7</i>	<i>10.9</i>	<i>24.7</i>	<i>13.0</i>
TAKINGS FROM ACCOMMODATION (\$'000)									
<i>June quarter 1995</i>	<i>1,364</i>	<i>2,853</i>	<i>4,217</i>	<i>1,640</i>	<i>470</i>	<i>2,110</i>	<i>635</i>	<i>234</i>	<i>869</i>
<i>1996—</i>									
April	601	984	1,585	824	170	995	380	130	510
May	412	1,032	1,444	422	158	580	169	74	243
June	498	950	1,448	557	149	706	140	66	206
<i>June quarter 1996</i>	<i>1,510</i>	<i>2,966</i>	<i>4,477</i>	<i>1,804</i>	<i>478</i>	<i>2,281</i>	<i>688</i>	<i>270</i>	<i>958</i>

TABLE 9 — CARAVAN PARKS BY STATISTICAL DIVISION (a), VICTORIA—continued

Particulars	Central Highlands (SD)			Wimmera (SD)			Mallee (SD)		
	Short-term	Long-term	Total	Short-term	Long-term	Total	Short-term	Long-term	Total
ESTABLISHMENTS, CAPACITY AND EMPLOYMENT									
<i>June quarter 1995—</i>									
Establishments	16	8	24	22	5	27	28	19	47
Capacity									
On-site vans	100	67	167	93	18	111	214	193	407
Other powered sites	1,045	278	1,323	928	258	1,186	1,473	1,014	2,487
Unpowered sites	522	101	623	1,003	109	1,112	862	315	1,177
Cabins, flats, etc.	81	51	132	152	49	201	224	102	326
<i>Total capacity</i>	<i>1,748</i>	<i>497</i>	<i>2,245</i>	<i>2,176</i>	<i>434</i>	<i>2,610</i>	<i>2,773</i>	<i>1,624</i>	<i>4,397</i>
Sites occupied by long-term guests	95	106	201	36	53	89	103	315	418
Other sites permanently reserved	275	17	292	125	4	129	107	12	119
Employment (persons)	47	18	65	66	17	83	96	55	151
<i>June quarter 1996—</i>									
Establishments	18	8	26	23	3	26	29	18	47
Capacity									
On-site vans	104	61	165	99	12	111	213	204	417
Other powered sites	1,207	349	1,556	861	212	1,073	1,828	984	2,812
Unpowered sites	752	155	907	961	91	1,052	956	208	1,164
Cabins, flats, etc.	106	73	179	123	41	164	225	110	335
<i>Total capacity</i>	<i>2,169</i>	<i>638</i>	<i>2,807</i>	<i>2,044</i>	<i>356</i>	<i>2,400</i>	<i>3,222</i>	<i>1,506</i>	<i>4,728</i>
Sites occupied by long-term guests	107	112	219	31	40	71	123	343	466
Other sites permanently reserved	317	13	330	56	6	62	298	31	329
Employment (persons)	59	23	82	58	12	70	101	56	157
SITE NIGHTS OCCUPIED ('000)									
<i>June quarter 1995</i>	<i>47.1</i>	<i>15.6</i>	<i>62.7</i>	<i>35.2</i>	<i>8.8</i>	<i>44.1</i>	<i>54.2</i>	<i>43.4</i>	<i>97.6</i>
<i>1996—</i>									
April	21.8	6.5	28.3	15.1	3.2	18.3	29.7	17.4	47.1
May	16.9	5.4	22.3	6.5	2.3	8.8	24.0	15.2	39.2
June	16.5	5.3	21.8	5.6	1.9	7.5	22.8	14.7	37.5
<i>June quarter 1996</i>	<i>55.1</i>	<i>17.2</i>	<i>72.3</i>	<i>27.3</i>	<i>7.3</i>	<i>34.6</i>	<i>76.5</i>	<i>47.3</i>	<i>123.8</i>
SITE OCCUPANCY RATES (per cent)									
<i>June quarter 1995</i>	<i>29.6</i>	<i>34.5</i>	<i>30.7</i>	<i>17.8</i>	<i>22.4</i>	<i>18.6</i>	<i>21.5</i>	<i>29.4</i>	<i>24.4</i>
<i>1996—</i>									
April	33.5	33.8	33.6	24.7	29.7	25.5	30.8	38.6	33.2
May	25.1	27.4	25.6	10.3	20.5	11.8	24.0	32.5	26.7
June	25.3	27.7	25.8	9.2	17.4	10.4	23.6	32.5	26.5
<i>June quarter 1996</i>	<i>27.9</i>	<i>29.6</i>	<i>28.3</i>	<i>14.7</i>	<i>22.6</i>	<i>15.8</i>	<i>26.1</i>	<i>34.5</i>	<i>28.8</i>
TAKINGS FROM ACCOMMODATION (\$'000)									
<i>June quarter 1995</i>	<i>418</i>	<i>151</i>	<i>569</i>	<i>491</i>	<i>117</i>	<i>608</i>	<i>757</i>	<i>497</i>	<i>1,254</i>
<i>1996—</i>									
April	291	97	387	226	47	272	422	205	627
May	162	69	231	100	29	130	269	164	432
June	149	62	212	80	24	103	248	158	406
<i>June quarter 1996</i>	<i>602</i>	<i>228</i>	<i>830</i>	<i>405</i>	<i>100</i>	<i>505</i>	<i>939</i>	<i>526</i>	<i>1,465</i>

TABLE 9—CARAVAN PARKS BY STATISTICAL DIVISION (a), VICTORIA—continued

Particulars	Loddon (SD) (a)			Goulburn (SD) (a)			Ovens-Murray (SD)		
	Short-term	Long-term	Total	Short-term	Long-term	Total	Short-term	Long-term	Total
ESTABLISHMENTS, CAPACITY AND EMPLOYMENT									
<i>June quarter 1995—</i>									
Establishments	32	14	46	44	23	67	40	8	48
Capacity									
On-site vans	161	149	310	202	239	441	226	73	299
Other powered sites	3,277	657	3,934	3,910	816	4,726	3,074	437	3,511
Unpowered sites	894	332	1,226	1,820	291	2,111	1,602	78	1,680
Cabins, flats, etc.	141	59	200	173	128	301	279	50	329
<i>Total capacity</i>	<i>4,473</i>	<i>1,197</i>	<i>5,670</i>	<i>6,105</i>	<i>1,474</i>	<i>7,579</i>	<i>5,181</i>	<i>638</i>	<i>5,819</i>
Sites occupied by long-term guests	249	307	556	239	398	637	126	176	302
Other sites permanently reserved	1,710	65	1,775	2,599	36	2,635	925	46	971
Employment (persons)	106	38	144	144	51	195	102	16	118
<i>June quarter 1996—</i>									
Establishments	25	12	37	53	26	79	36	8	44
Capacity									
On-site vans	101	130	231	265	256	521	203	84	287
Other powered sites	2,380	559	2,939	5,070	927	5,997	2,599	360	2,959
Unpowered sites	670	313	983	2,117	356	2,473	1,418	87	1,505
Cabins, flats, etc.	111	58	169	254	163	417	261	56	317
<i>Total capacity</i>	<i>3,262</i>	<i>1,060</i>	<i>4,322</i>	<i>7,706</i>	<i>1,702</i>	<i>9,408</i>	<i>4,481</i>	<i>587</i>	<i>5,068</i>
Sites occupied by long-term guests	144	287	431	327	482	809	111	122	233
Other sites permanently reserved	1,278	48	1,326	2,999	80	3,079	844	23	867
Employment (persons)	88	33	121	175	61	236	83	19	102
SITE NIGHTS OCCUPIED ('000)									
<i>June quarter 1995</i>	<i>209.6</i>	<i>41.8</i>	<i>251.5</i>	<i>283.0</i>	<i>51.6</i>	<i>334.6</i>	<i>145.9</i>	<i>24.9</i>	<i>170.8</i>
<i>1996—</i>									
April	54.9	11.9	66.8	123.4	25.2	148.7	50.4	7.0	57.4
May	49.0	11.6	60.7	110.8	22.4	133.3	33.7	6.1	39.8
June	47.4	11.0	58.4	108.8	21.3	130.1	31.9	5.7	37.5
<i>June quarter 1996</i>	<i>151.4</i>	<i>34.5</i>	<i>185.9</i>	<i>343.1</i>	<i>69.0</i>	<i>412.1</i>	<i>116.0</i>	<i>18.7</i>	<i>134.7</i>
SITE OCCUPANCY RATES (per cent)									
<i>June quarter 1995</i>	<i>51.5</i>	<i>38.4</i>	<i>48.7</i>	<i>50.9</i>	<i>38.5</i>	<i>48.5</i>	<i>30.9</i>	<i>42.9</i>	<i>32.3</i>
<i>1996—</i>									
April	56.1	37.3	51.5	53.4	49.4	52.7	37.5	39.7	37.8
May	48.5	35.4	45.3	46.4	42.5	45.7	24.3	33.5	25.3
June	48.5	34.7	45.1	47.1	41.7	46.1	23.7	32.2	24.7
<i>June quarter 1996</i>	<i>51.0</i>	<i>35.8</i>	<i>47.3</i>	<i>48.9</i>	<i>44.5</i>	<i>48.1</i>	<i>28.4</i>	<i>35.1</i>	<i>29.2</i>
TAKINGS FROM ACCOMMODATION (\$'000)									
<i>June quarter 1995</i>	<i>1,023</i>	<i>386</i>	<i>1,409</i>	<i>1,121</i>	<i>491</i>	<i>1,612</i>	<i>1,028</i>	<i>222</i>	<i>1,250</i>
<i>1996—</i>									
April	365	122	488	896	227	1,123	553	93	646
May	186	97	284	473	205	678	204	71	275
June	170	98	267	488	182	670	182	66	248
<i>June quarter 1996</i>	<i>721</i>	<i>317</i>	<i>1,039</i>	<i>1,857</i>	<i>614</i>	<i>2,471</i>	<i>939</i>	<i>230</i>	<i>1,169</i>

TABLE 9 — CARAVAN PARKS BY STATISTICAL DIVISION (a), VICTORIA—continued

Particulars	East Gippsland (SD) (a)			Gippsland (SD) (a)			Victoria		
	Short-term	Long-term	Total	Short-term	Long-term	Total	Short-term	Long-term	Total
ESTABLISHMENTS, CAPACITY AND EMPLOYMENT									
<i>June quarter 1995—</i>									
Establishments	67	7	74	49	16	65	434	164	598
Capacity									
On-site vans	362	44	406	195	149	344	1,991	1,892	3,883
Other powered sites	3,433	347	3,780	3,832	995	4,827	36,364	8,510	44,874
Unpowered sites	1,614	157	1,771	1,010	233	1,243	12,537	2,160	14,697
Cabins, flats, etc.	289	33	322	133	118	251	2,303	1,220	3,523
<i>Total capacity</i>	<i>5,698</i>	<i>581</i>	<i>6,279</i>	<i>5,170</i>	<i>1,495</i>	<i>6,665</i>	<i>53,195</i>	<i>13,782</i>	<i>66,977</i>
Sites occupied by long-term guests	270	88	358	97	366	463	1,717	4,626	6,343
Other sites permanently reserved	1,157	21	1,178	2,270	30	2,300	14,840	318	15,158
Employment (persons)	197	21	218	134	35	169	1,315	497	1,812
<i>June quarter 1996—</i>									
Establishments	78	7	85	42	13	55	439	160	599
Capacity									
On-site vans	431	61	492	159	125	284	2,064	1,798	3,862
Other powered sites	4,178	365	4,543	3,257	731	3,988	36,898	8,216	45,114
Unpowered sites	1,832	176	2,008	910	266	1,176	12,666	2,167	14,833
Cabins, flats, etc.	347	8	355	139	93	232	2,432	1,400	3,832
<i>Total capacity</i>	<i>6,788</i>	<i>610</i>	<i>7,398</i>	<i>4,465</i>	<i>1,215</i>	<i>5,680</i>	<i>54,060</i>	<i>13,581</i>	<i>67,641</i>
Sites occupied by long-term guests	294	89	383	84	327	411	1,758	4,738	6,496
Other sites permanently reserved	1,643	6	1,649	1,964	37	2,001	15,201	434	15,635
Employment (persons)	222	14	236	131	27	158	1,382	503	1,885
SITE NIGHTS OCCUPIED ('000)									
<i>June quarter 1995</i>	<i>161.8</i>	<i>13.2</i>	<i>175.0</i>	<i>239.4</i>	<i>41.0</i>	<i>280.3</i>	<i>1,864.9</i>	<i>559.4</i>	<i>2,424.3</i>
<i>1996—</i>									
April	86.3	3.4	89.7	78.0	12.3	90.3	717.4	197.5	914.9
May	68.8	3.2	72.0	68.2	12.2	80.4	593.1	189.0	782.1
June	67.3	3.0	70.4	66.0	11.7	77.7	574.7	181.0	755.7
<i>June quarter 1996</i>	<i>222.4</i>	<i>9.7</i>	<i>232.1</i>	<i>212.2</i>	<i>36.2</i>	<i>248.4</i>	<i>1,885.2</i>	<i>567.5</i>	<i>2,452.7</i>
SITE OCCUPANCY RATES (per cent)									
<i>June quarter 1995</i>	<i>31.2</i>	<i>24.9</i>	<i>30.6</i>	<i>50.9</i>	<i>30.1</i>	<i>46.2</i>	<i>38.5</i>	<i>44.6</i>	<i>39.8</i>
<i>1996—</i>									
April	42.4	18.8	40.4	58.2	33.8	53.0	44.2	48.5	45.1
May	33.4	17.1	32.0	49.2	32.4	45.6	35.6	44.9	37.5
June	33.8	16.5	32.3	49.3	32.1	45.6	35.7	44.4	37.4
<i>June quarter 1996</i>	<i>36.5</i>	<i>17.4</i>	<i>34.9</i>	<i>52.2</i>	<i>32.8</i>	<i>48.1</i>	<i>38.5</i>	<i>45.9</i>	<i>40.0</i>
TAKINGS FROM ACCOMMODATION (\$'000)									
<i>June quarter 1995</i>	<i>1,008</i>	<i>139</i>	<i>1,147</i>	<i>1,185</i>	<i>328</i>	<i>1,513</i>	<i>10,670</i>	<i>5,887</i>	<i>16,557</i>
<i>1996—</i>									
April	713	28	741	547	99	646	5,817	2,202	8,019
May	342	24	366	251	102	353	2,990	2,026	5,016
June	357	23	381	341	88	429	3,210	1,866	5,076
<i>June quarter 1996</i>	<i>1,412</i>	<i>75</i>	<i>1,488</i>	<i>1,139</i>	<i>290</i>	<i>1,428</i>	<i>12,016</i>	<i>6,095</i>	<i>18,111</i>

(a) Changed geographic boundaries effective from 1 July 1995 have affected the distribution of individual establishments among the various Statistical Divisions, including radical changes for Loddon, Goulburn, East Gippsland and Gippsland SDs.

TABLE 10 — CARAVAN PARKS: STATISTICAL DIVISIONS AND SELECTED

Statistical Divisions and Selected Statistical Local Areas	Capacity					Total	Sites occupied by long-term guests	Other sites permanently reserved	Employment (persons)
	Establishments	On-site vans	Other powered sites	Unpowered sites	Cabins, flats, etc.				
Frankston (C)	5	25	304	8	217	554	386	—	28
Greater Dandenong (C)	4	74	165	15	101	355	201	—	16
Hume (C)	4	124	309	14	74	521	218	—	15
Kingston (C)	6	129	524	60	105	818	521	—	27
Mornington Peninsula (S)									
South	38	103	3,570	493	93	4,259	195	1,810	97
Remainder	8	61	431	294	14	800	169	133	25
Wyndham (C)	3	5	179	20	42	246	142	14	9
Yarra Ranges (S)									
Central	3	8	189	205	9	411	72	85	4
Remainder	5	51	236	33	32	352	164	23	24
Balance	16	284	1,020	84	185	1,573	653	61	68
<i>Melbourne (SD)</i>	<i>92</i>	<i>864</i>	<i>6,927</i>	<i>1,226</i>	<i>872</i>	<i>9,889</i>	<i>2,721</i>	<i>2,126</i>	<i>313</i>
Colac-Otway (S)									
South	10	32	505	350	65	952	9	208	30
Remainder	3	36	84	18	3	141	38	4	7
Greater Geelong (C) — Part A									
South Barwon	7	109	457	50	77	693	339	21	32
Balance	4	41	407		66	514	135	217	18
Greater Geelong (C) — Parts B and C	17	24	4,126	392	158	4,700	59	1,957	99
Queenscliffe (B)	8	1	803		26	830	10	384	21
Surf Coast (S)	14	91	2,272	89	45	2,497	9	880	65
<i>Barwon (SD)</i>	<i>63</i>	<i>334</i>	<i>8,654</i>	<i>899</i>	<i>440</i>	<i>10,327</i>	<i>599</i>	<i>3,671</i>	<i>272</i>
Corangamite (S)	7	8	267	121	31	427	9	86	19
Glenelg (S)									
Portland	5	41	394	67	46	548	49	14	20
Remainder	6	14	257	264	21	556	15	10	11
Moyne (S)	11	29	1,102	789	45	1,965	4	74	23
South Grampians (S)	9	26	214	101	14	355	15	2	15
Warrnambool (C)	7	38	1,432	98	195	1,763	61	9	50
<i>Western District (SD)</i>	<i>45</i>	<i>156</i>	<i>3,666</i>	<i>1,440</i>	<i>352</i>	<i>5,614</i>	<i>153</i>	<i>195</i>	<i>138</i>
Ararat (RC)	5	35	289	205	44	573	23	95	22
Ballarat (C)	8	81	633	370	88	1,172	106	80	39
Hepburn (S)	5	15	337	187	17	556	25	85	7
Moorabool (S)	5	17	181	49	29	276	55	29	9
Pyrenees (S)	3	17	116	96	1	230	10	41	5
<i>Central Highlands (SD)</i>	<i>26</i>	<i>165</i>	<i>1,556</i>	<i>907</i>	<i>179</i>	<i>2,807</i>	<i>219</i>	<i>330</i>	<i>82</i>
Hindmarsh (S)	5	15	180	132	5	332	13	17	7
Horsham (RC)	8	38	241	347	45	671	14	27	24
North Grampians (S)	8	46	551	522	113	1,232	40	15	32
Balance	5	12	101	51	1	165	4	3	7
<i>Wimmera (SD)</i>	<i>26</i>	<i>111</i>	<i>1,073</i>	<i>1,052</i>	<i>164</i>	<i>2,400</i>	<i>71</i>	<i>62</i>	<i>70</i>
Buloke (S)	5	7	129	158	10	304	15	3	7
Gannawarra (S)	9	41	632	224	28	925	48	266	19
Mildura (RC)									
Part A	18	249	1,177	345	196	1,967	327	34	85
Part B	5	33	209	123	12	377	16	1	8
Swan Hill (RC)									
Central	4	39	378	111	64	592	27	8	27
Balance	6	48	287	203	25	563	33	17	11
<i>Mallee (SD)</i>	<i>47</i>	<i>417</i>	<i>2,812</i>	<i>1,164</i>	<i>335</i>	<i>4,728</i>	<i>466</i>	<i>329</i>	<i>157</i>

STATISTICAL LOCAL AREAS, VICTORIA, JUNE QUARTER 1996

<i>Site nights occupied</i>				<i>Site occupancy rates (per cent)</i>				<i>Takings from accommodation (\$'000)</i>			
<i>Apr.</i>	<i>May</i>	<i>June</i>	<i>June qtr</i>	<i>Apr.</i>	<i>May</i>	<i>June</i>	<i>June qtr</i>	<i>Apr.</i>	<i>May</i>	<i>June</i>	<i>June qtr</i>
12,536	13,214	12,734	38,484	75.4	76.9	76.6	76.3	181	184	175	540
8,296	7,872	7,597	23,765	77.9	71.5	71.3	73.6	129	125	89	343
9,400	9,696	9,060	28,156	60.1	60.0	58.0	59.4	126	137	126	390
16,765	17,385	16,638	50,788	68.3	68.6	67.8	68.2	180	193	189	562
65,733	63,268	61,630	190,631	51.4	50.1	50.4	50.7	302	210	305	818
9,865	9,889	9,233	28,987	41.1	39.9	38.5	39.8	75	78	87	240
4,782	4,878	5,067	14,727	64.8	64.0	68.7	65.8	36	34	38	108
5,943	5,401	5,505	16,849	48.2	42.4	44.6	45.0	41	31	31	104
7,168	6,497	6,226	19,891	67.9	59.5	59.0	62.1	105	80	74	259
32,297	30,706	28,596	91,599	68.4	63.0	60.6	64.0	410	371	335	1,115
172,785	168,806	162,286	503,877	58.2	56.1	55.7	56.7	1,585	1,444	1,448	4,477
9,928	7,455	7,075	24,458	34.8	25.3	24.8	28.2	112	49	48	208
1,284	1,352	1,293	3,929	30.4	30.9	30.6	30.6	13	12	11	36
12,491	12,420	11,866	36,777	60.1	57.8	57.1	58.3	130	123	118	371
11,903	11,327	10,787	34,017	77.2	71.1	70.0	72.7	53	50	44	148
70,462	64,028	62,020	196,510	50.0	43.9	44.0	45.9	334	201	312	847
15,168	12,668	15,034	42,870	60.9	49.2	60.4	56.8	109	46	85	239
43,910	28,498	27,486	99,894	58.6	36.8	36.7	44.0	243	100	90	433
165,146	137,748	135,561	438,455	53.3	43.0	43.8	46.7	995	580	706	2,281
4,825	3,858	3,398	12,081	37.7	29.1	26.5	31.1	40	22	17	80
3,898	2,997	2,889	9,784	23.7	17.6	17.6	19.6	42	30	26	98
2,424	1,188	1,067	4,679	14.5	6.9	6.4	9.2	39	19	13	71
6,075	3,702	3,177	12,954	10.3	6.1	5.4	7.2	90	30	28	148
1,922	1,128	1,166	4,216	18.0	10.2	10.9	13.1	28	16	14	59
11,264	6,256	5,187	22,707	21.3	11.4	9.8	14.2	270	125	106	502
30,408	19,129	16,884	66,421	18.1	11.0	10.0	13.0	510	243	206	958
6,560	4,344	4,368	15,272	38.2	24.5	25.4	29.3	128	49	54	231
10,997	9,257	8,317	28,571	31.3	25.5	23.7	26.8	178	127	104	409
4,128	3,836	3,708	11,672	24.7	22.3	22.2	23.1	26	21	18	66
3,568	3,124	2,923	9,615	43.1	36.5	35.3	38.3	34	25	23	82
3,013	1,713	2,450	7,176	43.7	24.0	35.5	34.3	21	9	12	42
28,266	22,274	21,766	72,306	33.6	25.6	25.8	28.3	387	231	212	830
1,419	1,190	1,126	3,735	14.2	11.6	11.3	12.4	10	7	7	23
4,217	2,806	2,348	9,371	20.9	13.5	11.7	15.3	70	36	30	136
12,060	4,419	3,710	20,189	32.6	11.6	10.0	18.0	186	83	63	333
631	376	301	1,308	12.7	7.4	6.1	8.7	6	3	3	13
18,327	8,791	7,485	34,603	25.5	11.8	10.4	15.8	272	130	103	505
1,275	976	1,076	3,327	14.0	10.4	11.8	12.0	7	5	5	17
11,875	10,265	9,967	32,107	42.8	35.8	35.9	38.1	68	33	32	133
23,818	20,162	19,020	63,000	40.4	33.1	32.2	35.2	383	286	267	936
1,239	1,340	1,905	4,484	11.0	11.5	16.8	13.1	13	11	16	40
5,924	4,381	3,547	13,852	33.4	23.9	20.0	25.7	119	72	63	254
3,013	2,032	2,013	7,058	17.8	11.6	11.9	13.8	36	25	23	84
47,144	39,156	37,528	123,828	33.2	26.7	26.5	28.8	627	432	406	1,465

TABLE 10 — CARAVAN PARKS: STATISTICAL DIVISIONS AND SELECTED

Statistical Divisions and Selected Statistical Local Areas	Establishments	Capacity				Cabins, flats, etc.	Total	Sites occupied by long-term guests	Other sites permanently reserved	Employment (persons)
		On-site vans	Other powered sites	Unpowered sites						
Central Goldfields (S)	3	17	169	34	10	230	65	21	8	
Greater Bendigo (C) — Part A										
Marong — Inner	5	47	214	103	33	397	75	29	15	
Remainder	6	81	644	264	59	1,048	145	246	28	
Greater Bendigo (C) — Part B	6	15	847	131	9	1,002	19	611	24	
Loddon (S)	8	24	468	154	27	673	41	176	20	
Macedon Ranges (S)	3	28	155	119	8	310	60	6	6	
Mount Alexander (S)	6	19	442	178	23	662	26	237	20	
<i>Loddon (SD)</i>	<i>37</i>	<i>231</i>	<i>2,939</i>	<i>983</i>	<i>169</i>	<i>4,322</i>	<i>431</i>	<i>1,326</i>	<i>121</i>	
Campaspe (S)										
Echuca	5	62	586	117	43	808	99	217	23	
Kyabram	3	40	76	24	14	154	44	18	6	
Remainder	5	28	291	148	7	474	38	160	10	
Delatite (S)	11	81	994	166	65	1,306	47	685	44	
Greater Shepparton (C)										
Part A	9	121	547	214	81	963	191	78	20	
Part B East and West	6	41	196	58	25	320	80	51	14	
Mitchell (S)	4	26	148	81	35	290	67	6	8	
Moira (S)	18	47	1,381	866	81	2,375	139	565	47	
Murrumbidgee (S)	14	61	1,135	659	51	1,906	52	772	53	
Strathbogie (S)	4	14	643	140	15	812	52	527	11	
<i>Goulburn (SD)</i>	<i>79</i>	<i>521</i>	<i>5,997</i>	<i>2,473</i>	<i>417</i>	<i>9,408</i>	<i>809</i>	<i>3,079</i>	<i>236</i>	
Alpine (S)	17	84	1,484	632	183	2,383	29	506	42	
Indigo (S)	6	30	242	158	19	449	30	68	12	
Milawa (S)										
North	4	43	148	59	31	281	31	30	12	
Remainder	6	54	291	182	31	558	40	22	10	
Towong (S)	7	28	415	327	29	799	8	95	16	
Wodonga (RC)	4	48	379	147	24	598	95	146	10	
<i>Ovens-Murray (SD)</i>	<i>44</i>	<i>287</i>	<i>2,959</i>	<i>1,505</i>	<i>317</i>	<i>5,068</i>	<i>233</i>	<i>867</i>	<i>102</i>	
East Gippsland (S)										
Bairnsdale	36	199	1,875	464	247	2,785	241	739	107	
Orbost	12	87	748	659	32	1,526	19	113	25	
South-West	3	25	87	14	—	126	33	1	7	
Remainder	11	31	342	226	29	628	7	40	43	
Wellington (S)										
Alberton	8	75	401	143	24	643	14	270	20	
Maffra	6	11	406	238	6	661	21	262	13	
Rosedale	5	41	566	181	13	801	39	214	11	
Remainder	4	23	118	83	4	228	9	10	10	
<i>East Gippsland (SD)</i>	<i>85</i>	<i>492</i>	<i>4,543</i>	<i>2,008</i>	<i>355</i>	<i>7,398</i>	<i>383</i>	<i>1,649</i>	<i>236</i>	
Bass Coast (S)										
Phillip Island	13	90	1,222	97	55	1,464	10	747	61	
Balance	14	54	1,276	244	11	1,585	58	759	34	
Baw Baw (S)	8	48	389	213	39	689	94	125	16	
La Trobe (S)	6	61	486	118	57	722	217	18	14	
South Gippsland (S)										
East	9	22	370	408	39	839	15	311	20	
Remainder	5	9	245	96	31	381	17	41	13	
<i>Gippsland (SD)</i>	<i>55</i>	<i>284</i>	<i>3,988</i>	<i>1,176</i>	<i>232</i>	<i>5,680</i>	<i>411</i>	<i>2,001</i>	<i>158</i>	
Victoria										
Short-term parks	439	2,064	36,898	12,666	2,432	54,060	1,758	15,201	1,382	
Long-term parks	160	1,798	8,216	2,167	1,400	13,581	4,738	434	503	
<i>Total</i>	<i>599</i>	<i>3,862</i>	<i>45,114</i>	<i>14,833</i>	<i>3,832</i>	<i>67,641</i>	<i>6,496</i>	<i>15,635</i>	<i>1,885</i>	

STATISTICAL LOCAL AREAS, VICTORIA, JUNE QUARTER 1996—continued

<i>Site nights occupied</i>				<i>Site occupancy rates (per cent)</i>				<i>Takings from accommodation (\$'000)</i>			
<i>Apr.</i>	<i>May</i>	<i>June</i>	<i>June qtr</i>	<i>Apr.</i>	<i>May</i>	<i>June</i>	<i>June qtr</i>	<i>Apr.</i>	<i>May</i>	<i>June</i>	<i>June qtr</i>
3,466	3,276	3,083	9,825	50.2	45.9	44.7	46.9	28	23	23	75
4,628	4,087	3,593	12,308	38.9	33.2	30.2	34.1	62	38	45	145
15,805	14,175	13,344	43,324	50.3	43.6	42.4	45.4	176	103	89	368
21,058	20,866	20,124	62,048	70.1	67.2	66.9	68.0	77	40	25	142
8,516	7,477	7,078	23,071	42.2	35.8	35.1	37.7	64	29	32	125
2,377	2,203	2,205	6,785	25.6	22.9	23.7	24.1	16	13	14	43
10,934	8,596	9,018	28,548	55.1	41.9	45.4	47.4	65	38	40	143
66,784	60,680	58,445	185,909	51.5	45.3	45.1	47.3	488	284	267	1,039
15,474	12,626	11,970	40,070	63.8	50.4	49.4	54.5	196	108	100	404
2,266	2,208	2,047	6,521	49.0	46.3	44.3	46.5	17	15	14	47
6,851	6,766	6,486	20,103	48.2	46.0	45.6	46.6	24	14	29	67
23,938	23,295	22,784	70,017	61.1	57.5	58.2	58.9	151	94	121	366
12,273	10,931	10,403	33,607	42.5	36.6	36.0	38.3	127	118	102	347
5,481	4,680	4,275	14,436	57.1	47.2	44.5	49.6	43	31	27	102
3,171	2,906	2,997	9,074	36.4	32.3	34.4	34.4	28	27	24	79
30,624	24,978	24,854	80,456	43.0	33.9	34.9	37.2	251	114	131	496
29,813	26,665	26,149	82,627	52.1	45.1	45.7	47.6	178	103	86	367
18,778	18,215	18,177	55,170	77.1	72.4	74.6	74.7	106	53	37	197
148,669	133,270	130,142	412,081	52.7	45.7	46.1	48.1	1,123	678	670	2,471
29,465	18,695	17,693	65,853	41.2	25.3	24.7	30.4	366	116	108	591
6,288	3,821	3,519	13,628	46.7	27.5	26.1	33.4	64	28	24	117
3,263	2,624	2,512	8,399	38.7	30.1	29.8	32.8	35	19	21	75
3,891	2,669	2,437	8,997	23.2	15.4	14.6	17.7	52	35	32	119
5,668	3,611	3,398	12,677	23.6	14.6	14.2	17.4	60	18	12	90
8,830	8,393	7,961	25,184	49.2	45.3	44.4	46.3	68	59	50	177
57,405	39,813	37,520	134,738	37.8	25.3	24.7	29.2	646	275	248	1,169
42,215	35,782	35,107	113,104	50.5	43.6	44.2	46.2	432	252	254	938
11,963	5,761	5,320	23,044	26.1	12.2	11.6	16.6	106	24	23	153
1,115	1,088	1,068	3,271	29.5	27.9	28.3	28.5	8	8	9	26
3,227	2,135	2,089	7,451	17.1	11.0	11.1	13.0	29	9	11	49
11,324	9,086	9,027	29,437	58.7	45.6	46.8	50.3	78	38	41	157
9,345	9,098	8,914	27,357	47.1	44.4	45.0	45.5	29	7	8	44
9,287	8,343	8,086	25,716	38.6	33.6	33.6	35.3	41	19	24	85
1,215	740	750	2,705	17.8	10.5	11.0	13.0	18	8	10	36
89,691	72,033	70,361	232,085	40.4	32.0	32.3	34.9	741	366	381	1,488
28,343	24,900	23,562	76,805	64.5	54.9	53.6	57.7	236	81	114	430
30,522	27,818	26,861	85,201	64.2	56.6	56.5	59.1	169	115	164	447
7,983	7,387	7,096	22,466	38.6	34.6	34.3	35.8	58	50	45	153
7,674	7,656	7,460	22,790	35.4	34.2	34.4	34.7	59	67	58	185
11,493	10,320	10,074	31,887	45.7	39.7	40.0	41.8	81	26	35	142
4,268	2,270	2,681	9,219	37.3	19.2	23.5	26.6	42	15	13	71
90,283	80,351	77,734	248,368	53.0	45.6	45.6	48.1	646	353	429	1,428
717,390	593,079	574,707	1,885,176	44.2	35.6	35.7	38.5	5,817	2,990	3,210	12,016
197,518	188,972	181,005	567,495	48.5	44.9	44.4	45.9	2,202	2,026	1,866	6,095
914,908	782,051	755,712	2,452,671	45.1	37.5	37.4	40.0	8,019	5,016	5,076	18,111

TABLE 11 — VISITOR HOSTELS BY STATISTICAL DIVISION, VICTORIA

<i>Particulars</i>	<i>Melbourne (SD)</i>	<i>Goulburn (SD)</i>	<i>Wimmera and Ovens-Murray (SDs)</i>	<i>Balance of State</i>	<i>Total Victoria</i>
ESTABLISHMENTS, CAPACITY AND EMPLOYMENT					
<i>June quarter 1995—</i>					
Establishments	16	7	12	20	55
Bed spaces	1,301	240	722	763	3,026
Employment (persons)	70	10	40	50	170
<i>June quarter 1996—</i>					
Establishments	16	8	15	17	56
Bed spaces	1,360	237	855	951	3,403
Employment (persons)	71	12	42	61	186
GUEST NIGHTS					
<i>June quarter 1995</i>	<i>65,541</i>	<i>1,501</i>	<i>10,077</i>	<i>15,913</i>	<i>93,032</i>
<i>1996—</i>					
April	25,716	382	5,333	9,814	41,245
May	21,692	377	5,273	8,146	35,488
June	19,655	562	2,758	6,075	29,050
<i>June quarter 1996</i>	<i>67,063</i>	<i>1,321</i>	<i>13,364</i>	<i>24,035</i>	<i>105,783</i>
BED OCCUPANCY RATES (per cent)					
<i>June quarter 1995</i>	<i>55.4</i>	<i>6.9</i>	<i>15.3</i>	<i>22.9</i>	<i>33.8</i>
<i>1996—</i>					
April	63.0	5.4	21.5	34.4	40.7
May	51.5	5.1	20.5	27.6	33.9
June	48.2	7.9	11.1	21.6	28.8
<i>June quarter 1996</i>	<i>54.2</i>	<i>6.1</i>	<i>17.7</i>	<i>27.9</i>	<i>34.5</i>
GUEST ARRIVALS					
<i>June quarter 1995</i>	<i>27,430</i>	<i>894</i>	<i>3,545</i>	<i>7,491</i>	<i>39,360</i>
<i>1996—</i>					
April	9,075	213	2,035	4,303	15,626
May	8,129	189	1,874	3,408	13,600
June	7,842	374	1,223	2,533	11,972
<i>June quarter 1996</i>	<i>25,046</i>	<i>776</i>	<i>5,132</i>	<i>10,244</i>	<i>41,198</i>
AVERAGE LENGTH OF STAY (days)					
<i>June quarter 1995</i>	<i>2.4</i>	<i>1.7</i>	<i>2.8</i>	<i>2.1</i>	<i>2.4</i>
<i>1996—</i>					
April	2.8	1.8	2.6	2.3	2.6
May	2.7	2.0	2.8	2.4	2.6
June	2.5	1.5	2.3	2.4	2.4
<i>June quarter 1996</i>	<i>2.7</i>	<i>1.7</i>	<i>2.6</i>	<i>2.3</i>	<i>2.6</i>
TAKINGS FROM ACCOMMODATION (\$'000)					
<i>June quarter 1995</i>	<i>893</i>	<i>24</i>	<i>120</i>	<i>207</i>	<i>1,245</i>
<i>1996—</i>					
April	388	6	74	135	603
May	320	5	59	111	494
June	288	10	30	88	416
<i>June quarter 1996</i>	<i>995</i>	<i>20</i>	<i>163</i>	<i>334</i>	<i>1,513</i>

EXPLANATORY NOTES

INTRODUCTION

1 This publication contains data for Victoria from a quarterly survey of tourist accommodation establishments.

SCOPE

2 Tourist accommodation establishments currently included in the survey comprise two groups:

- Establishments which provide predominantly short-term accommodation (i.e. for periods of less than 2 months) to the general public. These include:
 - *Hotels, motels and guest houses, with facilities* being hotels licensed to operate a public bar and motels, private hotels and guest houses all of which provide a bath (or shower) and toilet in most guest rooms and have breakfast available for guests. NOTE: From December quarter 1993, hotel, motel and guest house establishments with fewer than five rooms have been formally excluded from the scope of this statistical collection.
 - *Holiday flats, units and houses* (excluding establishments predominantly operated on a time share basis) which are operated by owners, managers or real estate agents who have sole letting rights to at least five flats, units or houses for short-term letting. They are mainly self-contained in terms of cooking, bath (or shower) and toilet facilities and do not have breakfast available for guests. Data for holiday flats, units and houses include short-term owner occupation as well as paying guest occupation.
 - *Visitor hostels* which provide accommodation to visitors on a bed basis (rather than by the room). This category does not include establishments providing charity type accommodation (e.g. Salvation Army hostels) nor hotels, motels and guest houses without in-room facilities which provide accommodation on a per room basis.
 - *Caravan parks* which provide either predominantly short-term (i.e. for periods of less than 2 months) or predominantly long-term (i.e. for periods of 2 months or more) accommodation to the general public and which provide powered sites for caravans and toilet, shower and laundry facilities for guests.

3 Data collected and published for each type of establishment (other than holiday flats, units and houses) include both long-term and short-term guests at these establishments.

4 Establishments which provide more than one type of accommodation (e.g. a motel with attached caravan park) are treated as two or more separate establishments. However, self-contained units, flats, cabins, etc. attached to hotels, motels or to caravan parks are included in the capacity for those establishments and not treated as separate holiday flat, unit or house establishments.

AUSTRALIAN STANDARD GEOGRAPHICAL CLASSIFICATION

5 Statistics presented in this publication have been classified according to the Australian Standard Geographic Classification (ASGC), Edition 2.5. This classification incorporates a number of hierarchic structures of geographic areas. The appropriate spatial units of the main structure of the ASGC used in this publication are defined as follows.

EXPLANATORY NOTES

AUSTRALIAN STANDARD
GEOGRAPHICAL CLASSIFICATION
continued

STATISTICAL LOCAL AREAS (SLAs) are in most cases either identical with, or have been aggregated to, the previously published whole or part legal Local Government Areas (LGAs) comprising boroughs (B), cities (C), rural cities (RC) and shires (S). In aggregate, SLAs cover the whole of the State without gaps or overlaps. In some cases, legal LGAs overlap Statistical Division or Subdivision boundaries and therefore comprise two SLAs (e.g. Part A and Part B).

STATISTICAL SUBDIVISIONS (SSDs) consist of one or more SLAs and form the intermediate size spatial unit for the presentation of regional data.

STATISTICAL DIVISIONS (SDs) consist of one or more SSDs. Where SSDs are not shown for statistical purposes, statistical local areas are shown ordered alphabetically within statistical divisions. The divisions are designed to be relatively homogeneous regions characterised by identifiable social and economic units within the region, under the unifying influence of one or more major towns or cities.

NOTE: As from 1 July 1995, extensive changes have been made to Local Government Areas (LGAs) in Victoria. The extent of the changes has meant that most LGAs have names unrelated to the previously existing LGAs. For more details, refer to the Information Paper *Victorian Local Government Amalgamations 1994-95: Changes to the Australian Standard Geographic Classification (1257.0)*. Further information is available in the *Australian Standard Geographic Classification, Edition 2.5 (1216.0)*.

UNPUBLISHED STATISTICS

6 The ABS may make available on request certain unpublished tourist accommodation statistics. A charge may be made for this information.

RELATED PUBLICATIONS

7 Publications for Australia, and each State and Territory, are released by the respective offices of the ABS. Tourist accommodation statistics for past quarters are available on request. Other ABS publications which may be of interest include:

- *Directory of Tourism Statistics (1130.0)* (irregular: first and latest issue; 1991)
- *Overseas Arrivals and Departures, Australia (3401.0)* (monthly)
- *Tourism Indicators, Australia (8634.0)* (quarterly)
- *Tourist Accommodation, Australia (8635.0)* (quarterly)

8 Current publications produced by the ABS are listed in the *Catalogue of Publications and Products (1101.0)*. The ABS also issues the *Release Advice (1105.0)* on Tuesdays and Fridays which lists publications to be released in the next few days. Both the *Catalogue* and *Release Advice* are available from any ABS office.

SYMBOLS AND OTHER USAGES

n.a. not available
n.p. not available for publication but included in totals where applicable
r revised
.. not applicable
— nil or rounded to zero
(B) Borough
(C) City
(RC) Rural City
(S) Shire

9 Where figures have been rounded, discrepancies may occur between totals and the sums of the component items.

GLOSSARY

.....

Average length of stay	<p>Average length of stay is expressed in numbers of days and calculated:</p> <ul style="list-style-type: none"> ▪ for hotels, motels and guest houses, by dividing <i>Guest nights</i> by <i>Guest arrivals</i> and ▪ for holiday flats, units and houses, by dividing <i>Unit nights occupied</i> by <i>Unit lettings</i>.
Bed spaces	<p>Three-quarter beds are counted as one bed space; double beds as two bed spaces. Cots are excluded.</p>
Capacity	<p>Capacity in terms of <i>Guest rooms</i>, <i>Bed spaces</i>, <i>Holiday units</i> or <i>Caravan park sites</i>, etc. is the maximum number available to accommodate paying guests during the survey period. Capacity closed temporarily for seasonal reasons is included.</p>
Caravan park capacity	<p>The total number of <i>On-site vans</i>, <i>Other powered sites</i>, <i>Unpowered sites</i> and <i>Cabins</i>, etc.</p>
Employment	<p>The number of persons working at accommodation establishments at the end of the survey period (including working proprietors and those working on other than accommodation activities).</p>
Establishments	<p>For hotels, motels and guest houses, caravan parks and visitor hostels, the number of establishments within the scope of the survey which operated for any part of the survey period, or which closed temporarily for the quarter for seasonal reasons.</p>
Guest arrivals	<p>The total number of paying guests counted only on the first night they stayed at the accommodation establishment.</p>
Letting entitles	<p>For holiday flats, units and houses, the number of owners, managers or real estate agents within the scope of the survey who operated for any part of the survey period.</p>
Occupancy	<p>Occupancy in terms of <i>Room nights</i>, <i>Unit nights</i> or <i>Site nights occupied</i> refers to the total number of nights each guest room, holiday unit or caravan park site, etc. was occupied during the survey period. NOTE: From September quarter 1988, caravan park sites, etc. permanently reserved for 2 months or more at the end of the survey period but only casually occupied by their tenants have been recorded continuously as <i>Site nights occupied</i> irrespective of whether the tenants of individual sites were in residence on any particular night.</p> <p>Occupancy in terms of <i>Guest nights</i> refers to the total number of nights each paying guest stayed during the survey period.</p>
Occupancy rates	<p><i>Occupancy rates</i> represent occupancy expressed as a percentage of total capacity available during the survey period, e.g.</p> $\text{Room occupancy rate (\%)} \text{ for the period} = \frac{\text{Room nights occupied}}{(\text{Guest rooms}) \times (\text{No. of days in the period})} \times 100$ <p>providing that, for establishments closing (other than for seasonal reasons) or opening during the survey period, the denominator of the above expression includes only operating periods.</p>

.....

GLOSSARY

.....

Other sites permanently reserved	The total number of powered and unpowered sites, on-site vans and cabins, etc. continuously let for 2 months or more by the end of the survey period to tenants who occupy the sites only on a casual or sporadic basis. Separate data for this item are available only from September quarter 1992.
Room nights available	The number of guest rooms available multiplied by the number of days for which they were available during the survey period. Including operating periods only for establishments closing (other than for seasonal reasons) or opening during the survey period.
Sites occupied by long-term guests	The total number of sites, etc. occupied at the end of the survey period by guests who have stayed continuously for 2 months or more.
Star grading	The grading of hotels and motels with facilities based on the classification system used by members of the Australian Automobile Association (AAA). The gradings are allocated according to a points system based on the amenities and facilities available to guests. Details of the grading scheme are contained in the RACV-RAASA members' publication <i>Accommodation Australia</i> , or the individual tour guides produced by members of the AAA. For the purpose of classifying establishments to a star grading in this publication, 'half' star gradings are ignored (e.g. a two and a half star grading has been shown as two star).
Takings from accommodation	Revenue received from the provision of accommodation. Takings from meals are excluded. Takings from accommodation for each month generally represent the takings received during that month. Where payments are received in advance of, or after, the provision of accommodation to guests, the monthly figure for takings from accommodation may not necessarily bear a direct relationship to the number of guests accommodated during the month. Rental and storage fees paid to caravan parks for the keeping of private vans in parks are included in the takings of the month they are received.
Unit lettings	The total number of times a holiday flat, unit or house was occupied by a new tenant, counted only on the first night it was occupied by the new tenant.

STATISTICAL DIVISIONS AND STATISTICAL LOCAL AREAS

VICTORIA (Effective 1 July 1995)

Melbourne (SD)

0661 Banyule (C) — Heidelberg
 0662 Banyule (C) — North
 0911 Bayside (C) — Brighton
 0912 Bayside (C) — South
 1111 Boroondara (C) — Camberwell North
 1112 Boroondara (C) — Camberwell South
 1113 Boroondara (C) — Hawthorn
 1114 Boroondara (C) — Kew
 1181 Brimbank (C) — Keilor
 1182 Brimbank (C) — Sunshine
 1451 Cardinia (S) — Pakenham
 1454 Cardinia (S) — South
 1611 Casey (C) — Berwick
 1614 Casey (C) — South
 1891 Darebin (C) — Northcote
 1892 Darebin (C) — Preston
 2171 Frankston (C) — East
 2174 Frankston (C) — West
 2311 Glen Eira (C) — Caulfield
 2314 Glen Eira (C) — South
 2671 Greater Dandenong (C) —
 Dandenong
 2674 Greater Dandenong (C) Balance
 3111 Hobsons Bay (C) — Altona
 3112 Hobsons Bay (C) — Williamstown
 3271 Hume (C) — Broadmeadows
 3274 Hume (C) — Craigieburn
 3275 Hume (C) — Sunbury
 3431 Kingston (C) — North
 3434 Kingston (C) — South
 3670 Knox (C)
 4210 Manningham (C)
 4330 Maribyrnong (C)
 4411 Maroondah (C) — Croydon
 4412 Maroondah (C) — Ringwood
 4601 Melbourne (C) — Inner
 4602 Melbourne (C) — Remainder
 4651 Melton (S) — East
 4654 Melton (S) Balance
 4971 Monash (C) — South-West
 4974 Monash (C) — Waverley East
 4975 Monash (C) — Waverley West
 5061 Moonee Valley (C) — Essendon
 5062 Moonee Valley (C) — West
 5251 Moreland (C) — Brunswick
 5252 Moreland (C) — Coburg
 5253 Moreland (C) — North
 5341 Mornington Psula (S) — East
 5344 Mornington Psula (S) — South
 5345 Mornington Psula (S) — West
 5711 Nillumbik (S) — South-West
 5714 Nillumbik (S) Balance
 5901 Port Phillip (C) — St Kilda
 5902 Port Phillip (C) — West
 6351 Stonnington (C) — Prahran
 6352 Stonnington (C) — Malvern
 6981 Whitehorse (C) — Box Hill
 6984 Whitehorse (C) — Nunawading East
 6985 Whitehorse (C) — Nunawading West
 7070 Whittlesea (C)
 7260 Wyndham (C)
 7351 Yarra (C) — North
 7352 Yarra (C) — Richmond
 7451 Yarra Ranges (S) — Central
 7454 Yarra Ranges (S) — North
 7455 Yarra Ranges (S) — South-West

Barwon (SD)

1751 Colac-Otway (S) — Colac
 1754 Colac-Otway (S) — North
 1755 Colac-Otway (S) — South
 2491 Golden Plains (S) — North-West
 2492 Golden Plains (S) — South-East
 2751 Bellarine — Inner
 2752 Corio — Inner
 2753 Geelong
 2754 Geelong West
 2755 Newtown
 2756 South Barwon — Inner
 2757 Greater Geelong (C) — Part B
 2758 Greater Geelong (C) — Part C
 6080 Queenscliffe (B)
 6491 Surf Coast (S) — East
 6492 Surf Coast (S) — West

Western District (SD)

1831 Corangamite (S) — North
 1832 Corangamite (S) — South
 2411 Glenelg (S) — Heywood
 2412 Glenelg (S) — North
 2413 Glenelg (S) — Portland
 5491 Moyne (S) — North-East
 5494 Moyne (S) — South-West
 5495 Moyne (S) Balance
 6261 South Grampians (S) — Hamilton
 6264 South Grampians (S) — Wannon
 6265 South Grampians (S) Balance
 6730 Warrambool (C)
 8469 Lady Julia Percy Island

Central Highlands (SD)

0260 Ararat (RC)
 0571 Ballarat (C) — Central
 0572 Ballarat (C) — Inner North
 0573 Ballarat (C) — North
 0574 Ballarat (C) — South
 2911 Hepburn (S) — East
 2912 Hepburn (S) — West
 5151 Moorabool (S) — Bacchus Marsh
 5154 Moorabool (S) — Ballan
 5155 Moorabool (S) — West
 5990 Pyrenees (S)

Wimmera (SD)

2980 Hindmarsh (S)
 3191 Horsham (RC) — Central
 3194 Horsham (RC) Balance
 5811 North Grampians (S) — St Arnaud
 5814 North Grampians (S) — Stawell
 6890 West Wimmera (S)
 7631 Yarriambiack (S) — North
 7632 Yarriambiack (S) — South

Mallee (SD)

1271 Buloke (S) — North
 1272 Buloke (S) — South
 2250 Gannawarra (S)
 4781 Mildura (RC) — Part A
 4782 Mildura (RC) — Part B
 6611 Swan Hill (RC) — Central
 6612 Swan Hill (RC) Balance

STATISTICAL DIVISIONS AND STATISTICAL LOCAL AREAS

VICTORIA (Effective 1 July 1995)

Loddon (SD)

1671 Central Goldfields (S)—Marlborough
 1674 Central Goldfields (S) Balance
 2611 Eaglehawk
 2612 Greater Bendigo (C)—Central
 2613 Huntly—Inner
 2614 Marong —Inner
 2615 Strathfieldsaye—Inner
 2618 Greater Bendigo (C)—Part B
 3941 Loddon (S)—North
 3942 Loddon (S)—South
 4131 Macedon Ranges (S)—Kyneton
 4134 Macedon Ranges (S)—Romsey
 4135 Macedon Ranges (S) Balance
 5431 Mount Alexander (S)—Castlemaine
 5434 Mount Alexander (S) Balance

Goulburn (SD)

1371 Campaspe (S) — Echuca
 1374 Campaspe (S) — Kyabram
 1375 Campaspe (S) — Rochester
 1376 Campaspe (S) — South
 1951 Delatite (S) — Benalla
 1954 Delatite (S) — North
 1955 Delatite (S) — South
 2831 Greater Shepparton (C) — Part A
 2834 Greater Shepparton (C) — Part B
 East
 2835 Greater Shepparton (C) — Part B
 West
 4851 Mitchell (S) — North
 4854 Mitchell (S) — South
 4900 Moira (S)
 5621 Murrindindi (S) — East
 5622 Murrindindi (S) — West
 6430 Strathbogie (S)

Ovens—Murray (SD)

0111 Alpine (S) — East
 0112 Alpine (S) — West
 3351 Indigo (S) — Part A
 3352 Indigo (S) — Part B
 4711 Milawa (S) — North
 4714 Milawa (S) — South
 4715 Milawa (S) — Wangaratta
 6671 Towong (S) — Part A
 6672 Towong (S) — Part B
 7170 Wodonga (RC)

East Gippsland (SD)

2111 East Gippsland (S) — Bairnsdale
 2114 East Gippsland (S) — Orbost
 2115 East Gippsland (S) — South-West
 2118 East Gippsland (S) Balance
 6811 Wellington (S) — Alberton
 6812 Wellington (S) — Avon
 6813 Wellington (S) — Maffra
 6814 Wellington (S) — Rosedale
 6815 Wellington (S) — Sale

Gippsland (SD)

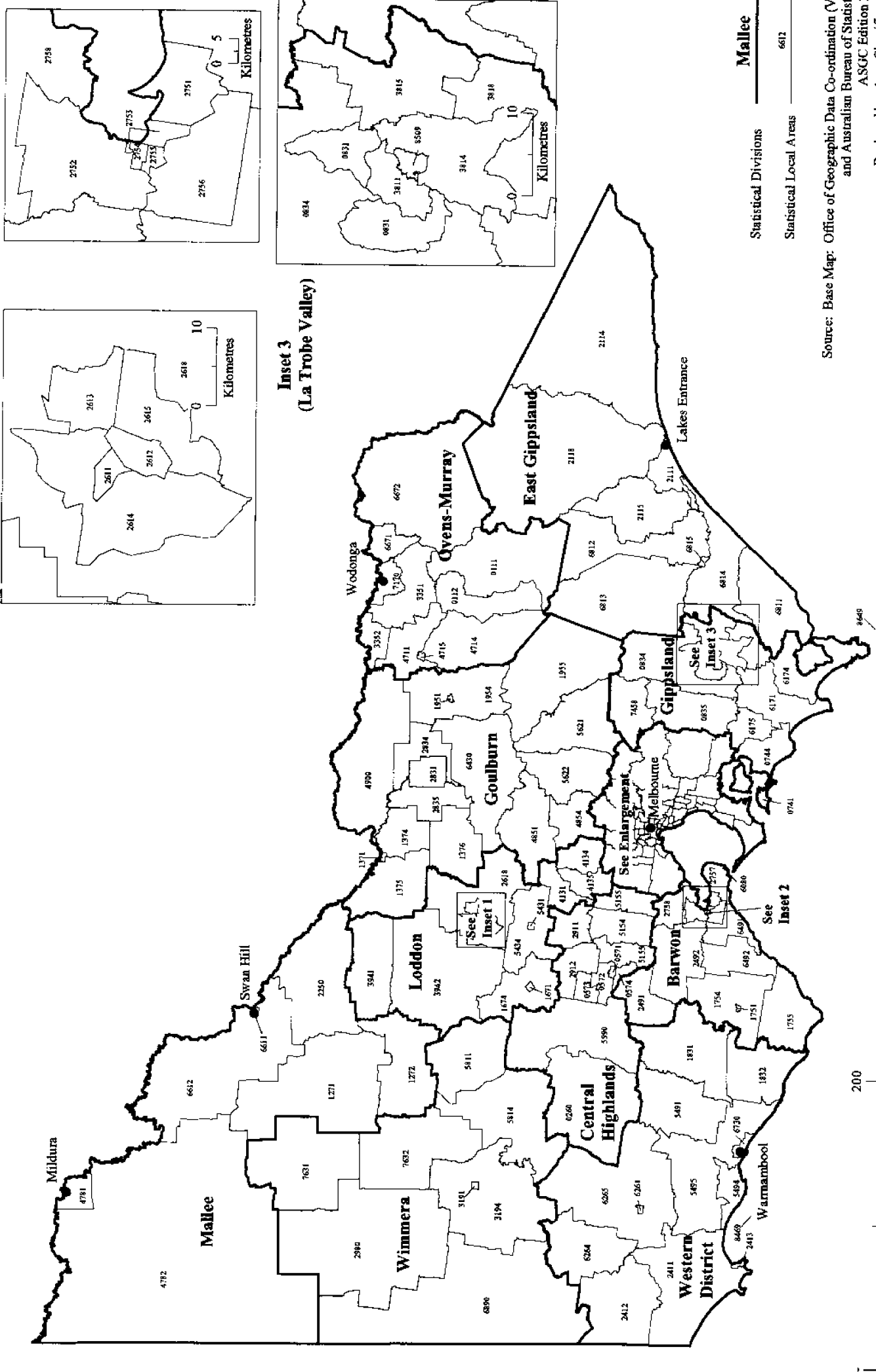
0741 Bass Coast (S) — Phillip Is.
 0744 Bass Coast (S) Balance
 0831 Baw Baw (S) — Part A
 0834 Baw Baw (S) — Part B East
 0835 Baw Baw (S) — Part B West
 3811 La Trobe (S) — Moe
 3814 La Trobe (S) — Morwell
 3815 La Trobe (S) — Traralgon
 3818 La Trobe (S) Balance
 6171 South Gippsland (S) — Central
 6174 South Gippsland (S) — East
 6175 South Gippsland (S) — West
 7458 Yarra Ranges (S) — Part B
 8509 Yallourn Works Area
 8529 French Island
 8649 Bass Strait Islands

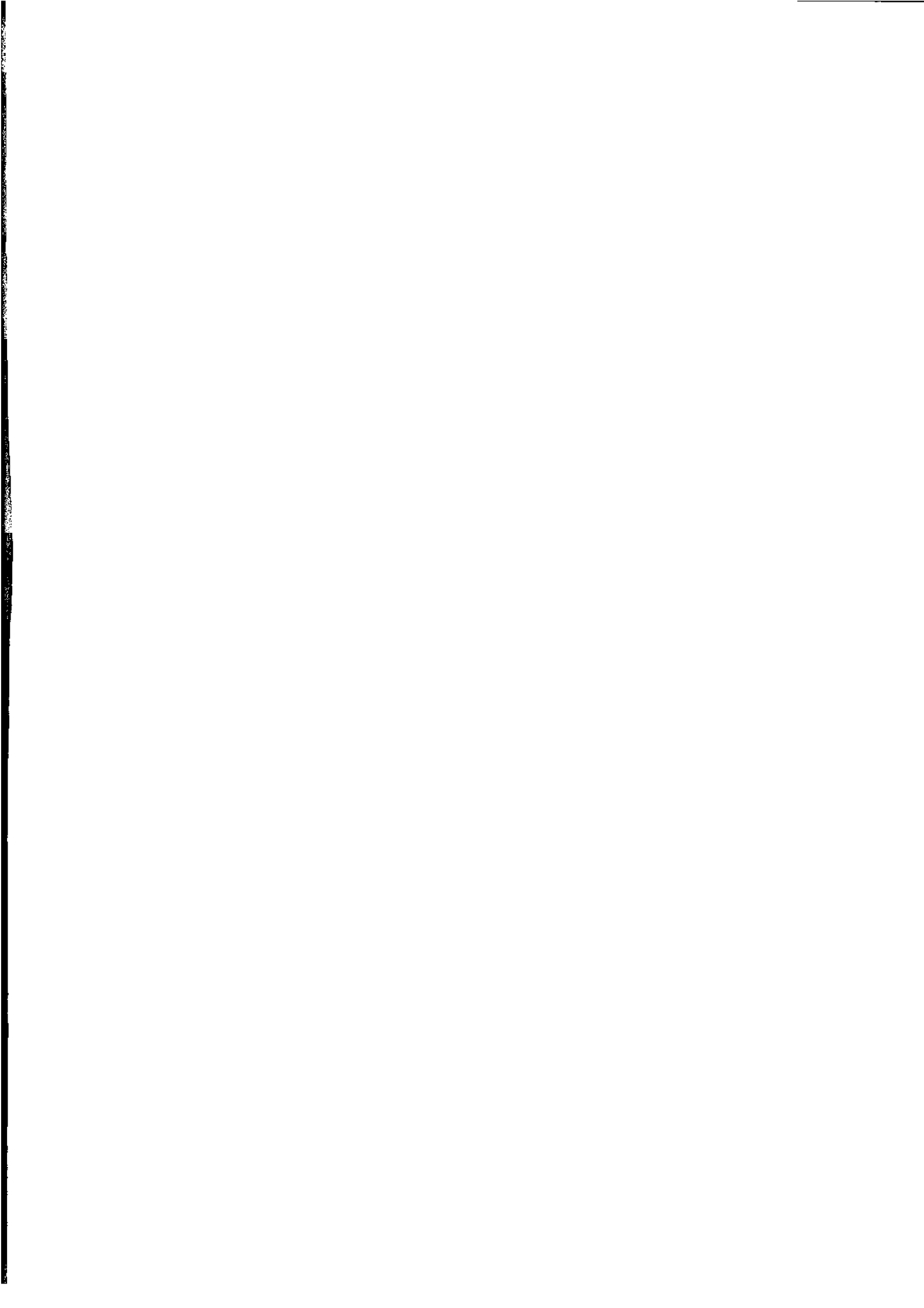
Off-Shore Areas and Migratory (SD)

9779 Off-Shore Areas & Migratory

Victoria

Statistical Divisions and Statistical Local Areas, 1 July 1995





FOR MORE INFORMATION

The ABS publishes a wide range of information on Australia's economic and social conditions. A catalogue of publications and products is available from any of our offices (see below).

INFORMATION CONSULTANCY SERVICES

Information tailored to special needs of clients can be obtained from the Information Consultancy Service available at ABS Offices (see below).

ABS PRODUCTS

A large number of ABS products is available from the ABS Bookshops (see below). The ABS also provides a subscription service – you can telephone the ABS Subscription Service Australia wide toll free on 1800 0206 08.

ELECTRONIC SERVICES

A large range of data is available via on-line services, diskette, magnetic tape, tape cartridge and CD ROM. For more details about our electronic data services, contact any ABS office (see below) or email us at:

X.400 (C:Australia,PUB:Telememo,O:ABS,FN:STAT,SN:INFO)
Internet Stat.info@abs.telememo.au
Keylink STAT.INFO/ABS

You can visit us on the Internet at: <http://www.statistics.gov.au>

GENERAL SALES AND INQUIRIES

- Sydney 02 9268 4611
 - Melbourne 03 9615 7755
 - Brisbane 07 3222 6351
 - Perth 09 360 5140
 - Adelaide 08 8237 7100
 - Hobart 002 20 5800
 - Darwin 08 8943 2111
 - Canberra 06 252 6627
- Information Services, ABS
PO Box 10, Belconnen ACT 2616



2863520006963

ISSN 1037-2900

RRP \$15.50